

IN THIS ISSUE

From the Region 8
Director

ASCE National
Declared Candidates
for President-Elect

Interstate Bridge
Replacement Program
Update

Region 8 Member
Spotlight - ASCE
Seattle YMF Members

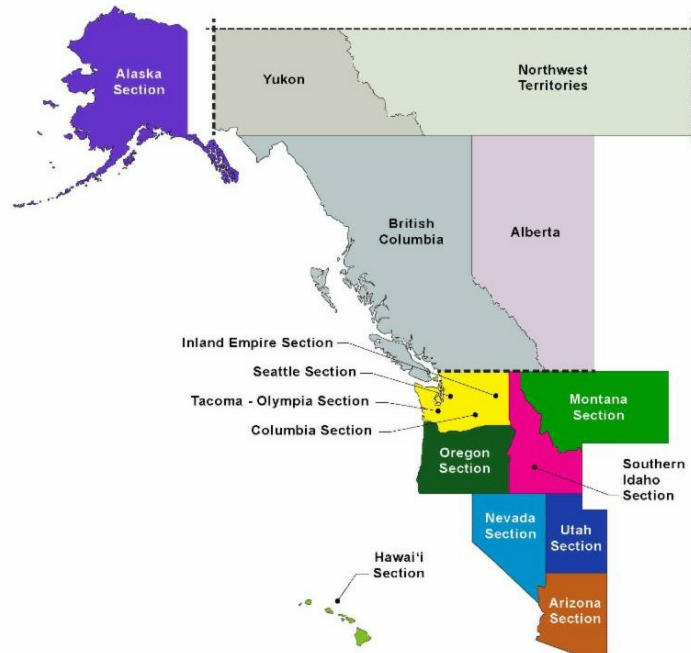
Region 8 Group Activity
Spotlight - Seattle
ASCE YMF

Region 8 Article Quick
Reads - ASCE Civil
Engineering Magazine,
Then and Now

Region 8 Legislative
Liaison's Corner -
Congress reaches
agreement on WRDA

Region 8 Student
Activities - Symposia
Schedule & Information
for 2023

Region 8 Calendar
of Upcoming Events



"Help you matter more and enable you to make a bigger difference"



MESSAGE FROM THE REGION 8 DIRECTOR



Holiday greetings, Region 8 ASCE members! I hope, as you read this, that you are doing well and looking forward to the Christmas and New Year's holidays that will soon be upon us when we can visit and share good times with family and friends.

Where has the year gone? Are the holidays *really* almost upon us? It seems like it was only yesterday that the Region 8 Board of Governors and I were engaged in preparing for our annual fall Board of Governors planning meeting and Region 8 Assembly, which was held in Walla Walla, WA last August 19-20. Those meetings were rated as very successful and informative

by those who attended. Now we are busily planning for the next Region 8 Assembly meeting, which will be held in Anaheim, California in conjunction with the first live Multi-Regional Leadership Conference (the MRLC) in three years. Thank goodness we only have two live face-to-face Assembly meetings of all 12 Region 8 sections to plan for and attend each year!

This year's MRLC will be held jointly with our Region 9 colleagues (Region 9 consists ASCE members from the San Diego, Los Angeles, San Francisco and Sacramento sections) at the Doubletree Hotel in Anaheim, California. Because of the COVID pandemic, this will be the first LIVE Region 8-9 MRLC since 2020. The MRLC is hosted by the Society's Member Training Committee and focuses on educating current and incoming section and branch leaders on how ASCE operates and how to be effective volunteer leaders. MRLCs are fun events and provide many great networking opportunities. If you are a section or branch officer and have not signed up yet for the Anaheim MRLC, I encourage you to contact [Nancy Berson](#) at ASCE Headquarters by email at , or any

Region 8 Governor for more information as soon as possible.

The MRLC will take place on Friday and Saturday February 17th and 18th. The day before the MRLC starts (Thursday, February 16th) we will have our winter Region 8 Assembly meeting at the Anaheim office of HNTB, which is not far from the Doubletree Hotel. The Assembly is focused on providing the section and branch officers within Region 8 with specific information relevant to what's going on in our region. Any elected section or branch officer is eligible to attend the Assembly meeting. The cost of attending the Assembly meeting is paid by the section or branch the individual member is assigned to. Many folks have already signed up for the Assembly meeting, but reservations are still being taken at <https://forms.gle/KhUtsaapWiNxbkRN9>. I hope to see many of you in Anaheim next February.

Larry Magura
Director
ASCE Region 8

DECLARED CANDIDATES FOR ASCE 2023 PRESIDENT-ELECT

Click [here](#) to read about the declared candidates for 2023 President-elect, and the ASCE election guidelines.

INTERSTATE BRIGDE REPLACEMENT (IBR) PROGRAM UPDATE

At the annual meeting of the Oregon Transportation Forum (of which the Oregon Section ASCE is a member) held at the Port of Portland offices on Tuesday, December 13th, attendees received an update on the status of this megaproject which will replace the existing twin I-5 bridges over the Columbia River between Portland, OR and Vancouver, WA. The southbound bridge was completed in 1914 and the northbound structure in 1958. Neither bridge is considered to be seismically safe, and ongoing maintenance efforts are rapidly increasing in cost as the structures continue to age. The update was provided by Mr. Greg Johnson, Program Administrator for the IBR.

Mr. Johnson told attendees that the Locally Preferred Alternative (LPA) will include an extension of Portland TriMet's MAX light rail system into downtown Vancouver as part of the single replacement bridge structure. The replacement bridge will be a fixed structure with no lift span and will be designed to survive a Magnitude 9 Cascadia earthquake with a goal of providing 116 feet of clearance between the low chord of the bridge and the mean water surface level of the Columbia River. A number of alternatives, including a submerged tunnel, were considered and rejected in the course of settling on the Locally Preferred Alternative. The project is currently at the 5% design level and is entering the detailed permitting phase, which is expected to run for the next two years.

The project is being jointly developed by the Washington Department of

Transportation (WDOT) and the Oregon Department of Transportation (ODOT), with each state participating equally in project cost. It is anticipated that funding for the project will come from multiple sources, including the States of Oregon and Washington and the federal Infrastructure Investment and Jobs Act (IIJA). No project cost estimate has been developed yet, but the project is estimated to cost somewhere in the range of \$5 to \$7.5 Billion. A substantial amount of the project budget has already been committed. Mr. Johnson said that final design will proceed in parallel with the environmental permitting phase of the project which is just now starting. He hopes to see construction on the project start by late 2025 or early 2026.

Submitted By:
Larry Magura
Director
ASCE Region 8

**Reminder the MRCL is coming soon! Feb 17-18
and Region 8 & 9 Board of Governors Dinner Feb 15, Time TBA**

REGION 8 MEMBER SPOTLIGHT

ASCE Seattle YMF Members Recognized in Puget Sound Engineering Council (PSEC) Awards

Submitted by: Bernie Sison, Region 8 Governor, Tacoma-Olympia Section

ASCE Seattle YMF members Nicki Pedan, YMF Board K-12 Outreach Chair, and Phillip Yu, ASCE Seattle Section, University of Washington Practitioner Advisor, are recipients of the 2023 PSEC Awards, the Kenneth Porter Award and the Young Engineer of the Year.

Nicki was selected for the Kenneth Porter Award, recognizing Nicki for her work with K-12 students and engaging them to engineering education. Phillip was selected as Young Engineer of the Year, recognizing his demonstrated progress in his professional experience and achievements.

An organization comprised of local chapters of international and national engineering and scientific societies in the Puget Sound area of Washington State, the PSEC was created to bring increased public awareness and appreciation of science, technology, engineering, math (STEM) fields and industries. PSEC main goals are to:

- Inform the public on technical matters
- Advance the interests of the member societies it represents as well as those of the larger engineering and scientific community
- Reflect the technical concerns of these societies and of this community

Congratulations again to ASCE members Nicki and Phillip. For more information about the PSEC, please visit their website: <https://pseconline.org/>. For more information on ASCE Seattle Section YMF, please visit their website: <https://www.seattleasceymf.org/>.

(Note: Source Reference for PSEC from the PSEC website.)

Phillip Yu, E.I.T., MSCE
ASCE Seattle YMF University Practitioner Advisor,
University of Washington

Philip is a recent graduate from the University of Washington's Civil Engineering Master's program with a focus in structural engineering and mechanics (the only one of his immediate family that decided to not be a pharmacist!). He currently works as a structural engineer with the ports and coastal group at Mott MacDonald where he aids in the design of various marine structures such as piers, floats, and breakwaters.



Nicole (Nicki) Peden, E.I.T.
ASCE Seattle YMF Secretary

Nicole (Nicki) is a structural engineer at Davido Consulting Group (DCG). Nicki was born and raised in Spokane, Washington and earned her BSCE at the University of Washington - class of 2020. Nicki was first involved with ASCE by participating on the Concrete Canoe team and later she became the ASCE UW PNW Conference Chair. She continued her involvement with the YMF ASCE for two years as the K-12 Outreach Chair and now will be the YMF ASCE secretary. On her free time, she enjoys activities like rock climbing, spinning, skiing, traveling, watching movies, and exploring new restaurants and breweries with friends around Seattle.



Nicole Peden, far left

Activity Photos from ASCE Seattle Section YMF



REGION 8 GROUP ACTIVITY SPOTLIGHT

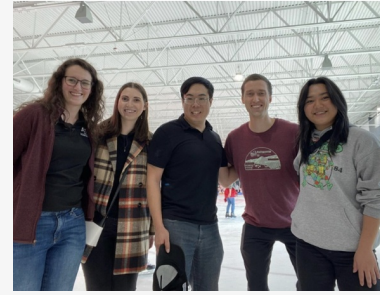
ABOUT SEATTLE ASCE YMF... In 1912, ASCE held its 44th annual national convention in Seattle. This convention was so successful that within a year, Seattle engineers founded the Seattle Section of the ASCE on June 30, 1913. Over the past 100 years, Seattle ASCE members have had a significant impact on public works in Washington State, including the development of Seattle's first harbor, Interstate 5 through Seattle in 1957, and a cross-sound ferry terminal in 1961. Seattle hosted later national conventions in 1967, 1971, 1986, and 2000.

Younger members have long played a significant role in the Section; the roots of the Seattle Younger Member's Forum (YMF) go back as far as at least 1970, with the first records of an Associate Member Committee. The Committee became a Forum and was later changed to the Younger Member Forum at the end of 2000. In 1995, the YMF initiated their popular Popsicle Stick Bridge Competitions. In 2000, YMF members helped engineer and construct the world's largest origami paper crane (at the time) with the World Peace Project for Children; the crane had a 200-foot wingspan and required 57,600 square feet of paper and 4 miles of tape. The Seattle YMF has hosted successful Western Regional Young Member Council (WRYMC) conferences in 1984, 1988, 1995, 2007, and 2015, and co-hosted an international WRYMC with the

Southern Nevada YMF across the border in Vancouver, BC in 2000.
Follow them on Instagram, Facebook, and LinkedIn, or visit their website at:
<https://www.seattleasceymf.org/>.

Seattle ASCE YMF Recent and Upcoming Events

Some Seattle ASCE YMF board members bonding at the Kraken Community Iceplex!



SEATTLE ASCE YMF

date
October 12th
2:30 pm

location
2424 SW Andover
st, Seattle, WA
98106

dress
closed-toed shoes,
long pants, PPE
(provided if you do
not have your own)

**NUCOR
STEEL
MILL
TECH
TOUR**




**WABS:
Build Cool Stuff**

Washington Alliance for Better Schools (WABS) is now recruiting volunteers for its in-person middle school program **Build Cool Stuff (BCS)**. The collaborative foundation of **BCS** allows students to explore real-world topics that are connected to their everyday lives.

Program Dates: October 24, 2022 to January 12, 2023.
The total time commitment is between 8 and 12 hours. 12 sessions total across 6 school districts

In need of professional volunteers!

Registration: Please contact Van Onishi, Director of Educator Leadership, at van@wabsalliance.org



SEATTLE ASCE YMF PRESENTS OUR
OCTOBER NETWORKING EVENT
AT THE

**Pumpkin
Patch**

LOCATION
CARPINTO BROTHERS PUMPKIN PATCH
IN KENT

TIME
MID-MORNING ON OCTOBER 22ND

RSVP WITH THE LINK IN OUR INSTAGRAM BIO



**November Networking
Office Tour
@
Osborn Consulting
Incorporated**

Snacks and non-alcoholic/alcoholic beverages will be provided!
Several OCI engineers will be giving a short presentation on their company culture and some of the amazing projects they are currently working on. Be sure to stay for networking before and after the presentation!

November 17th
5:30 pm
1402 3rd ave, Suite 415, Seattle WA 98101



SEATTLE YMF PRESENTS
OUR 2022
Holiday Party

DEC | THURS | 6 PM
08

4358 LEARY WAY NW
SUITE B
SEATTLE WA 98107

RSVP WITH THE
LINK IN OUR
LINKTREE

Seattle YMF and Portland YMF
present

**2023
Leadership & Ski
Retreat**

Friday, January 27th - Sunday, January 29th
Ronald, Washington

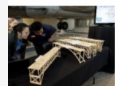
Fill out the interest form in our linktree now
so we can get plans rolling!

**2022-2023
Mentorship
Program**

Are you interested in participating in a mentorship program as a mentor/mentee? Well, you're in luck! The Seattle ASCE YMF Mentorship Program will pair young professionals with more experienced civil engineers. If you are interested in being a mentor/mentee, please go ahead and fill out the google forms located in our link tree!

QUESTIONS?
Contact Divya Shaunik at
mentorseattleasce.org

28th Annual Popsicle Stick Bridge Competition
Saturday March 11th, 2023



What: PSB is a fun opportunity for students to challenge themselves with a real-world application of math and science through an engineering exercise of building a strong, light, and aesthetically pleasing bridge using only Popsicle sticks and white glue. On contest day, bridges will be loaded to see if any are left standing!

Who: All Washington High Schools are encouraged to participate. Each school is allowed to send up to four official teams with a maximum of 4 students per team to this year's contest – note that unofficial teams are also welcomed to participate. Teachers are encouraged to use this as an activity for class or as an after-school activity.

Where: The competition will be held in-person on **March 11th, 2023**

How: Submit 2023 Popsicle Stick Bridge Interest Survey located at: [2023 Interest Form](#) (Click Here)

Once we have received your information, the 2022-2023 PSB Coordinators will update you on updates and details leading up to competition. Popsicle sticks can be supplied if requested.

Entry: **Free!**

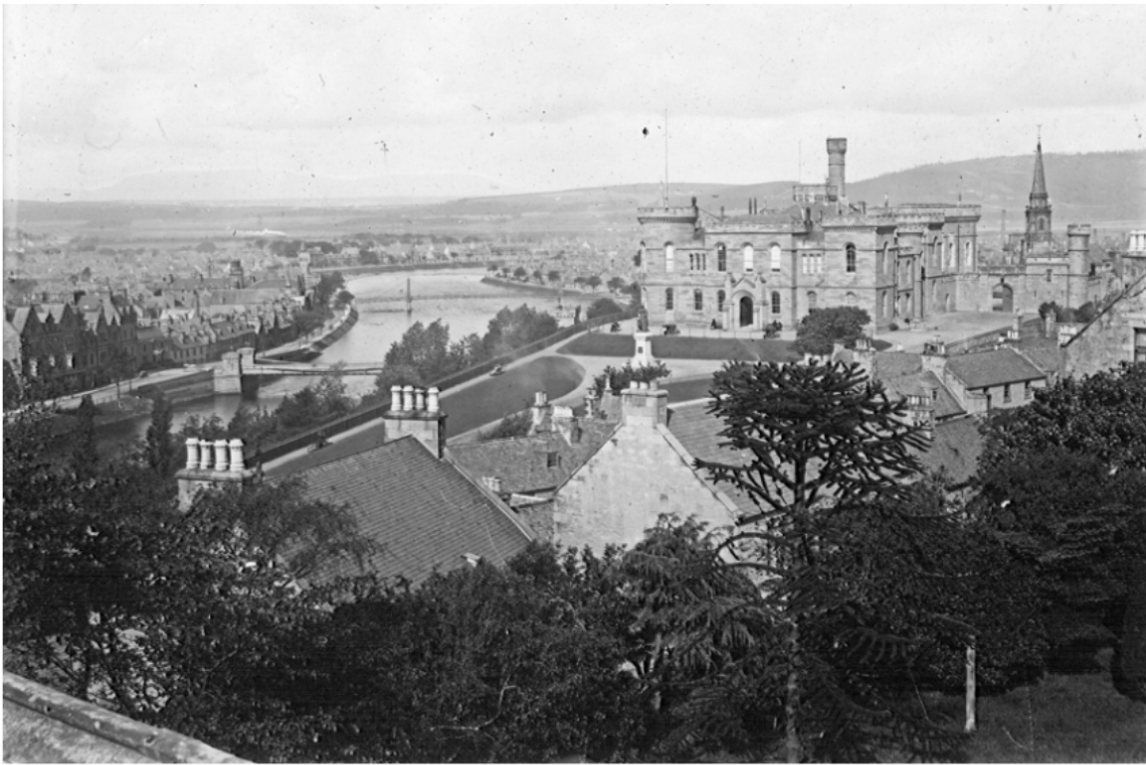
Prizes: Prizes to be announced at the competition!! In past years, we have given out calculators, watches, North Face backpacks filled with goodies, Kindle Fires, and gift cards.

Scholarship Opportunity: The ASCE YMF will be offering a scholarship opportunity to high school seniors who have participated in this competition and will be pursuing a field related to math, science, or engineering. Participation in PSB will be a factor in scholarship judging. Details to be announced soon.

Hosted By: Seattle Section American Society of Civil Engineers (ASCE) Younger Member Forum. Visit us on the web at: <http://www.seattleasceymf.org/psb>

Additional Opportunity: The Puget Sound Engineering Council (PSEC) maintains a list of engineers willing to talk to high schools & middle schools about engineering. To find out more, please visit [PSECOnline.org/Education/](#) or contact Outreach@pseconline.org





The current castle consists of a courthouse building, constructed in 1838, and a prison building, constructed in 1848, with commanding views over the River Ness, as visible in this undated image from the early 20th century. (Image courtesy of Cook Collection, Inverness Museum and Art Gallery, High Life Highland)

Visitors Center Underway for Scottish Highlands Castle, By T.R. Witcher (excerpt from ASCE site)

The rugged Scottish Highlands remain a potent symbol of beauty, rich culture, and impassioned history. But while people might not currently think of a specific building as the architectural symbol for the country's northern reaches, that may be about to change.

Perched atop a hill in the center of Inverness, the region's largest city, the two buildings that constitute the current historic Inverness Castle — which has roots that stretch back almost a millennium — are in the midst of a multiyear refurbishment to transform the castle into a gateway for visitors to the scenic region with a turbulent past.

"The entire complex is going to become for (the) first time in its history a public building, a visitors center," says architect Stuart MacKellar, a partner with architecture firm [LDN Architects](#), which has been tapped to design the conversion of the castle. "Inverness is really the gateway to the Highlands. This is a natural gravitational point within Inverness." The idea is that visitors will learn about the stories and voices of the people of the Highlands, and then be pushed out to different attractions and places of interest within the region."



The two-building complex that constitutes Inverness Castle in the popular Highlands region of Scotland is being renovated to include a visitors center. (Rendering courtesy of LDN Architects LLP ©)

...To read the rest of the article, visit Civil Engineering Magazine's December issue online:

<https://www.asce.org/publications-and-news/civil-engineering-source/civil-engineering-magazine>

REGION 8 LEGISLATIVE CORNER

Congress Reaches Bipartisan Agreement to Secure Passage for Federal Water Resources Bill

From ASCE Government Relations & Advocacy:

<https://www.asce.org/advocacy>

Congress reaches agreement on Water Resources Development Act (WRDA) of 2022

This week, the House Committee on Transportation & Infrastructure and the Senate Committee on Environment & Public Works [announced an agreement on the Water Resources Development Act of 2022](#). The bipartisan, bicameral agreement was included in the [James M. Inhofe National Defense Authorization Act \(NDAA\) for Fiscal Year 2023](#). The agreement contains several provisions providing the U.S. Army Corps of Engineers to effectively assess the resilience of water infrastructure systems nationwide and includes several provisions which were priorities for ASCE in 2022.

Specifically, the agreement includes a five-year reauthorization of the National Levee Safety Program—one of ASCE's top priorities for WRDA 2022—which was set to expire at the end of FY 2023. The agreement would also establish a National Low Head Dam Inventory that will track man-made, river spanning structures nationwide producing dangerous current that pose a hazard to public safety. WRDA also includes a provision making permanent the current cost share formula for Inland Waterways Trust Fund (IWTF) projects. WRDA 2020

established the general fund cost share at 65 percent for inland waterways projects, with the remaining 35 percent being paid for by the IWTF. ASCE had originally supported a 75-25 percent cost share formula which was included in the [Senate's version of WRDA](#).

The House passed NDAA with WRDA included on Thursday a vote of 350 – 80, with the Senate expected to take up soon. ASCE strongly supports the bipartisan WRDA agreement and urges its swift passage. [ASCE sent a letter to Congressional leaders](#) on Wednesday expressing support. ASCE will continue to monitor developments as they become available.

REGION 8 STUDENT ACTIVITIES

Symposia Schedule & Information for 2023

Please note: To volunteer for or sponsor symposia events, please contact symposium hosts.

From PNW site: <https://studentsymposium.asce.org/pacific-northwest/>



April 14-15, 2023

Co-Hosted by:

*Montana State University Bozeman,
Montana State University Northern
Carroll College, Montana Tech University*



118

Days

14

Hours

59

Minutes

45

Seconds

WHAT IS THE PACIFIC NORTHWEST ASCE STUDENT SYMPOSIUM?

Comprised of 19 universities across the Pacific Northwest (PNW) region, which include: Alaska, British Columbia, Idaho, Montana, Oregon, and Washington. The PNW ASCE Student Symposium is one of many regional student events held annually for ASCE student chapters in their respective regions, providing an opportunity for students to showcase their achievements and skills by designing, building, and/or competing in various civil engineering activities.

Each Symposium take place in the spring and include various competitions, along with professional and personal development opportunities, networking, and fun, as a celebration of civil engineering and the ASCE community.

WHO CAN ATTEND?

All are welcome to register for the 2023 Pacific Northwest Student Symposium. Students who will be competing in Society-wide Competitions must meet eligibility requirements as detailed by

ASCE: <https://www.asce.org/communities/student-members/conferences/eligibility>

MEET THE TEAM: The 2023 Pacific Northwest ASCE Student Symposium will be organized by the Planning Committee, comprised of students and faculty from Montana State University Bozeman, Carroll College, Montana Tech University, and Montana State University Northern.



If you have any questions, feel free to contact us at the following email address: pnw.asce.symposium2023@gmail.com

IMPORTANT DATES:

- Mailer 1 Receipt Form | October 30
- Steel Bridge Participation Form| October 30
- Student Chapter Registration | November 30
- Mailer 2 Receipt Form | January 30
- Attendee Registration| February 15
- Mailer 3 Receipt Form | March 15
- Late Registration Cutoff | [TBD]
- 2023 ASCE Pacific Northwest Student Symposium – April 14-15, 2023

To download your Mailer 1, please visit:

<https://studentsymposium.asce.org/pacific-northwest/mailers/>

From the Intermountain Southwest site:

<https://studentsymposium.asce.org/intermountain-southwest/>



MEET THE HOST:

University of Nevada, Reno (UNR)

UNR is excited to host the 2023 conference for the ASCE chapters of the Intermountain South region. During this three day competition, schools will be participating in technical and non-technical events to enhance professional and social development.

Contact us at: isws.unr.2023@gmail.com and visit us
at: <https://www.unrasce.com/>

Follow us on Instagram [@nevadaasce](https://www.instagram.com/nevadaasce)



Important Deadlines

- Mailer 1 Receipt Form | **[OCTOBER 30]**
- Steel Bridge Participation Form | **[OCTOBER 30]**
- Intent and Eligibility Acknowledgement Form (1 per competition) | **[NOVEMBER 4]**
- Concrete Canoe Preliminary Project Schedule and RFQ Pre-Qualification Form | **[NOVEMBER 4]**
- Student Chapter Registration Fee | **[NOVEMBER 30]**
- Timber-Strong Design Build Phase One Deliverables | **[JANUARY 16TH]**
- Mailer 2 Receipt Form | **[JANUARY 30]**
- ASCE Student Chapter Annual Reports | **[FEBRUARY 1 @8:59 PST]**
- ASCE Student Chapter Annual Dues | **[FEBRUARY 1 @8:59 PST]**
- Timber-Strong Design Build Phase Two Deliverables | **[FEBRUARY 3]**
- Attendee Registration | **[FEBRUARY 15]**
- Concrete Canoe Project Proposal and MTDS Addendum | **[FEBRUARY 17]**
- Surveying Competition Task 1A | **[FEBRUARY 27 @ 2PM PST]**
- Student Symposium Paper Competition Submission | **[FEBRUARY 28]**
- Timber-Strong Design Build Phase Three Deliverables | **[MARCH 3]**
- Sustainable Solution Deliverables | **[TBD]**
- Innovation Contest Video Submission | **[TBD]**
- Mailer 3 Receipt Form | **[MARCH 15]**
- Late Registration Cutoff | **[TBD]**
- **2023 ASCE ISWS Student Symposium – April 13th – April 15th**

WHAT ARE THE SYMPOSIA COMPETITIONS?

ASCE Concrete Canoe Competition

Since the early 1970s, American Society of Civil Engineers (ASCE) student chapters have competed to be the best at designing, constructing, and racing concrete canoes. During that time, canoe mixtures and designs have varied, but the long-established tradition of teamwork, camaraderie, and spirited competition has been constant. Each year, teams, their associates, judges, and other participants build upon this tradition. This year, teams answered a call for Technical Proposals and Enhanced Focus Area Reports and are competing to be the winning bid on a prototype standardized canoe design for future concrete canoe competitions.



To learn more, please visit:

<https://www.asce.org/communities/student-members/conferences/asce-concrete-canoe-competition>

AISC/ASCE Student Steel Bridge Competition

[ASCE](#) and the [American Institute of Steel](#)

Construction (AISC) are partnering to offer the Student Steel Bridge Competition (SSBC) at ASCE Student Symposia. The Student Steel Bridge Competition challenges students to extend their classroom knowledge to a practical and hands-on steel-design project that grows their interpersonal and professional skills, encourages innovation, and fosters impactful relationships between students and industry professionals. Each student team develops a concept for a scale-model steel bridge to span approximately 20 feet and to carry 2,500 pounds according to the competition rules. The team must determine how to fabricate their bridge and then plan for an efficient assembly under timed construction conditions at the competition. Bridges are also load-tested, weighed, and judged on aesthetics.



Smarter.
Stronger.
Steel.

ASCE UESI Surveying Competition

The ASCE UESI Surveying Competition's educational and professional goals include a recognition of the importance of basic surveying principles to all civil engineering projects. Students will be required to use standard field and office equipment and procedures to solve common problems encountered in industry. A clear understanding of and ability to apply basic surveying principles will assist the graduate civil engineer in communicating and working with the surveying professionals on the job site and during the design process. The ASCE UESI Surveying Competition rules describe five tasks: a topographic mapping project with a presentation and four field tasks.



For more information, please visit:

<https://www.asce.org/communities/student-members/conferences/asce-uesi-surveying-competition>

ASCE Sustainable Solutions Competition

The ASCE Sustainable Solutions Competition challenges students to develop a stronger understanding of sustainability and learn to incorporate sustainable solutions into everyday problems that engineers incur. Students are encouraged to be creative in their solutions and use all resources available.



2023 Topic

The fictional City of ASCE wants to revitalize one downtown block of Engineer Street. The City

hopes to turn the underutilized area into a gathering place for the community and reimagine the surrounding spaces to create a cohesive and walkable corridor.

For more information, please visit: <https://www.asce.org/communities/student-members/conferences/asce-sustainable-solutions-competition>

Timber-Strong Design Build Competition – Pilot Competition

ASCE has partnered with the American Wood Council (AWC), APA – Engineered Wood Association (APA), and Simpson Strong-Tie (SST) to pilot the Timber-Strong Design BuildSM Competition. The competition seeks student teams to design and build an artistically creative 2-story wood light-framed building that is sustainable, aesthetically pleasing and structurally durable. In light of the COVID-19 pandemic, the 2021 in-person build has been replaced with the creation of a building information model (BIM).



For more information, please visit: <https://www.asce.org/communities/student-members/conferences/timber-strong-design-build-competition>

ASCE Student Symposium Paper Competition (MANDATORY)

The ASCE Student Symposium Paper Competition emphasizes the importance of being able to write and present a paper as essential communication skills for all engineers and often necessary for advancement in your career. Good faith participation in the ASCE Student Symposium Paper Competition, including submission and presentation by at least one (1) member of the ASCE Student Chapter, is a requirement to advance to an ASCE Society-wide Competition Finals. Competitions requiring this include Concrete Canoe, Student Steel Bridge, UESI Surveying, Innovation Contest, and Sustainable Solutions. No other Society-wide competition report or paper may serve as a submission for the ASCE Student Symposium Paper Competition.

Student Symposium Paper Competition topic, due date and submission location will be released by the 2023 host this fall in Mailer 2.



REGION 8 CALENDAR OF EVENTS

- February 15, 2023: Region 8 Board of Governors Meeting, Anaheim, CA
- February 16, 2023: Region 8 Assembly meeting, Anaheim, CA
- February 17 – 18, 2023: Workshop for Student Leaders, Doubletree Hotel, Anaheim, CA
- February 17 – 18, 2023: Regions 8 – 9 Multi-Region Leadership Conference (MRLC) Doubletree Hotel, Anaheim, CA
- March 1 – 3, 2023: Legislative Fly-in, Washington, D.C.
- March 4 – 5, 2023: Board of Direction Meeting, Washington, D.C. (or Reston, VA)
- April 14-15: ASCE Pacific Northwest Symposium, Montana State University in Bozeman, Montana

ASCE REGION 8 EVENTS



ASCE Region

8 | <http://regions.asce.org/region8/> | www.facebook.com/asceregion8



Share This Email



Share This Email



Share This Email

ASCE Region 8 | PO Box 27808, Las Vegas, NV 89126

[Unsubscribe agonzalez@entellus.com](mailto:agonzalez@entellus.com)

[Update Profile](#) | [Constant Contact Data Notice](#)

Sent by asceregion8@gmail.com powered by



Try email marketing for free today!