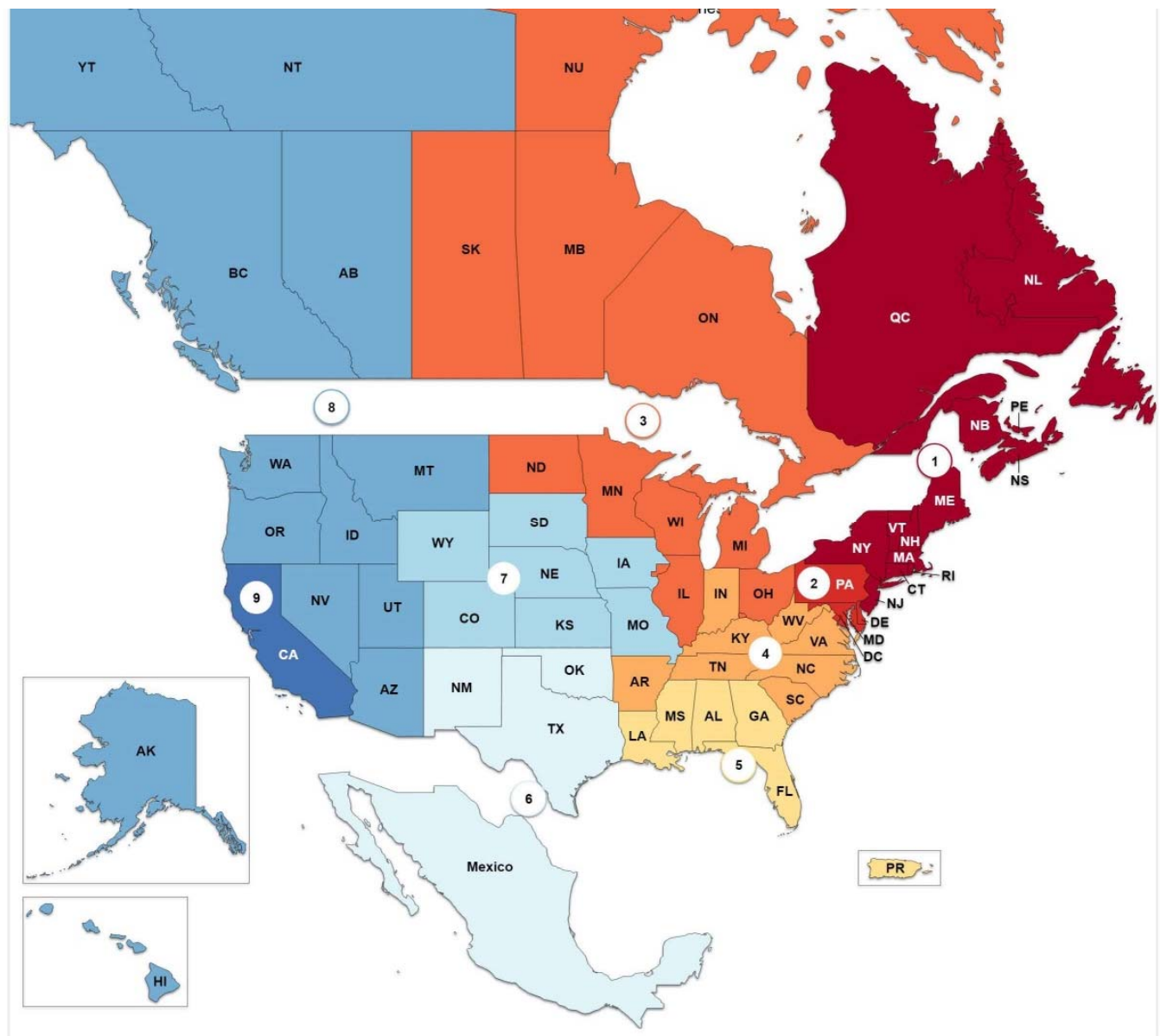


INTRODUCTION TO ASCE'S REGION 8



ASCE TODAY

- 177 Countries
- 150,000+ Members
- 10 Geographic Regions
- 9 Institutes



REGION 8 GEOGRAPHY

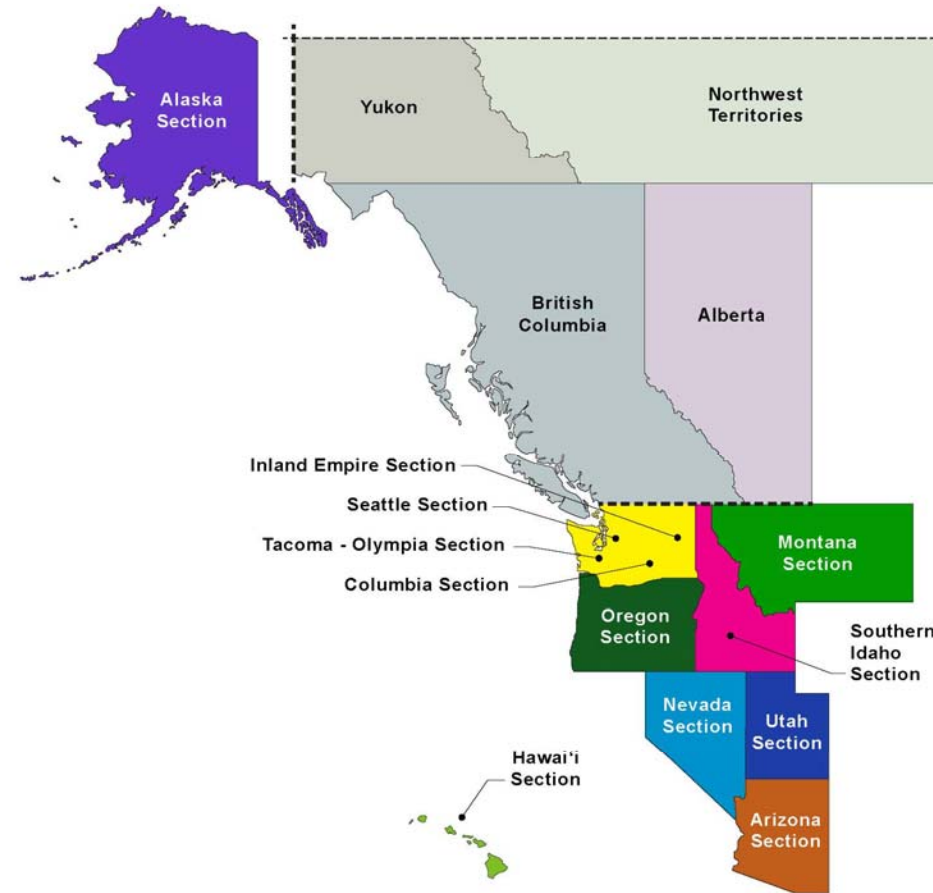
Alaska Section
Arizona Section
Hawaii Section
Montana Section
Nevada Section
Oregon Section
Southern Idaho Section
Washington Sections

- Inland Empire
- Seattle
- Tacoma-Olympia
- Columbia

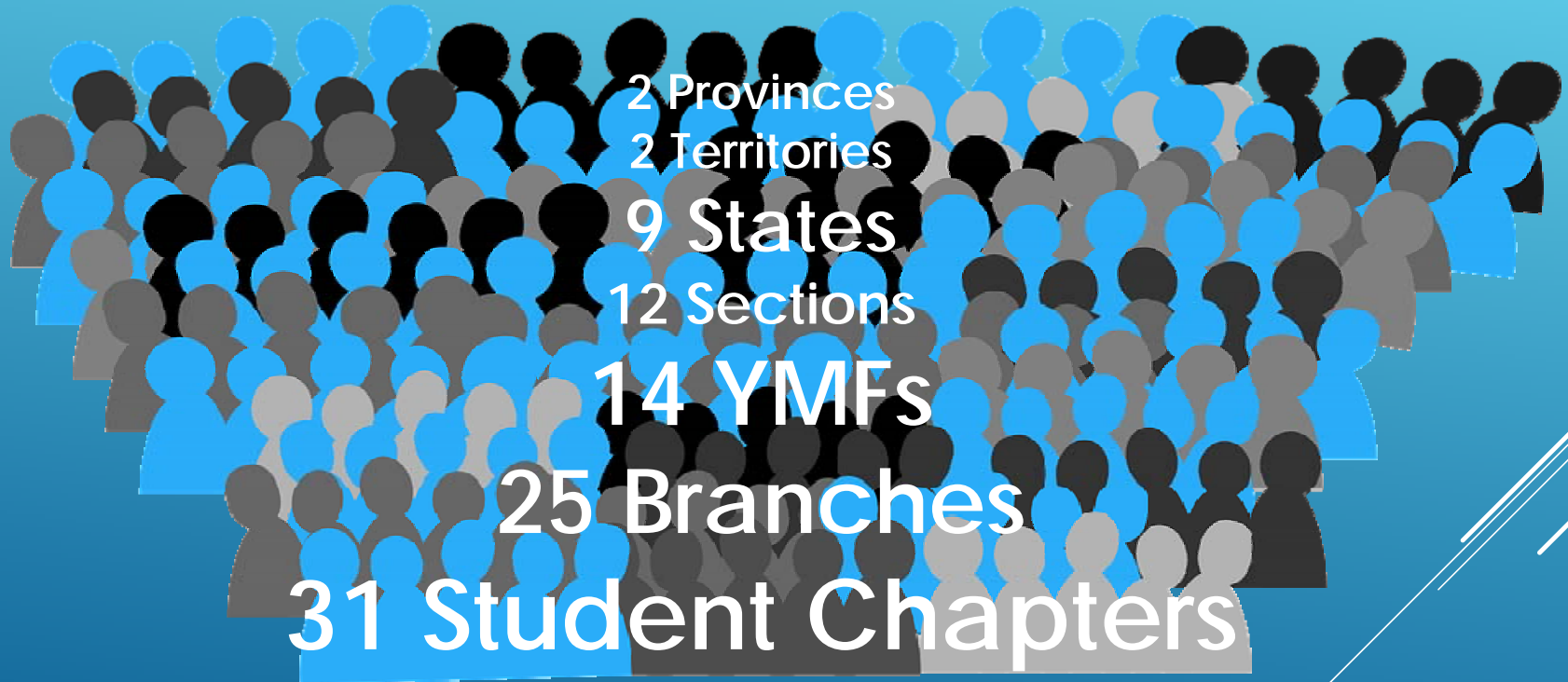
Utah Section

Western Canada

- ❖ Alberta
- ❖ British Columbia
- ❖ Yukon
- ❖ Northwest Territories

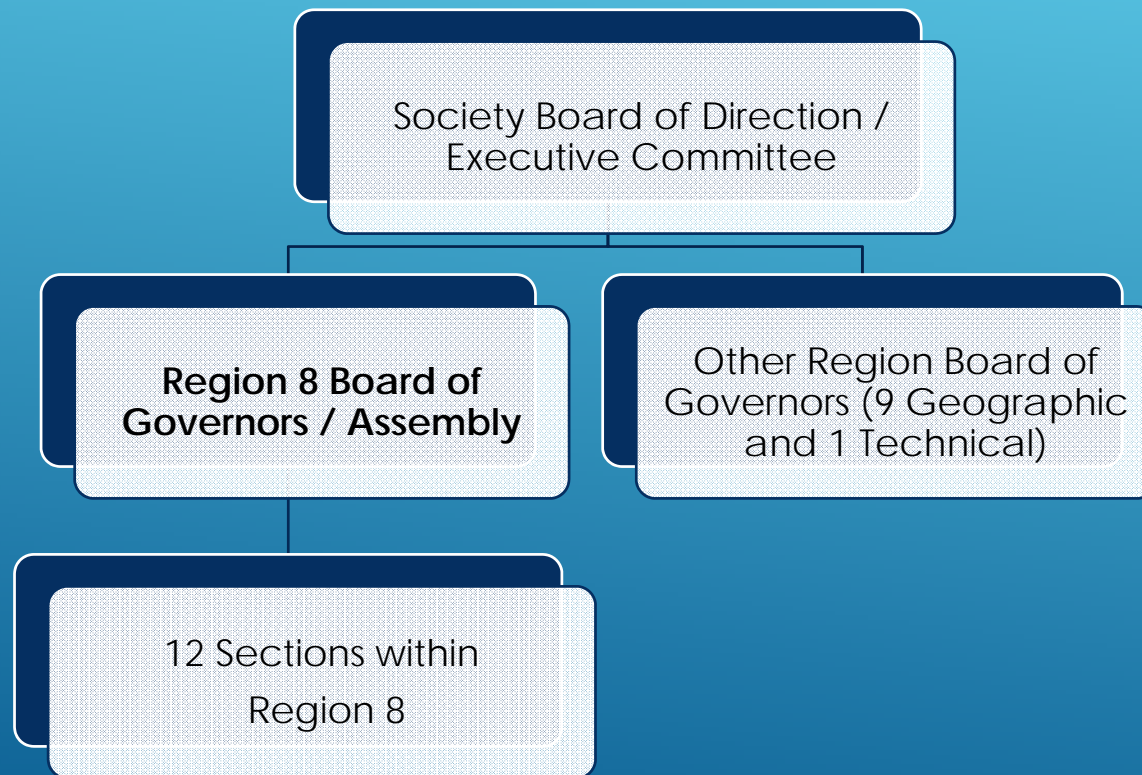


REGION 8 BY THE NUMBERS



13,900+ TOTAL MEMBERS

ASCE GEOGRAPHIC UNITS GOVERNANCE STRUCTURE



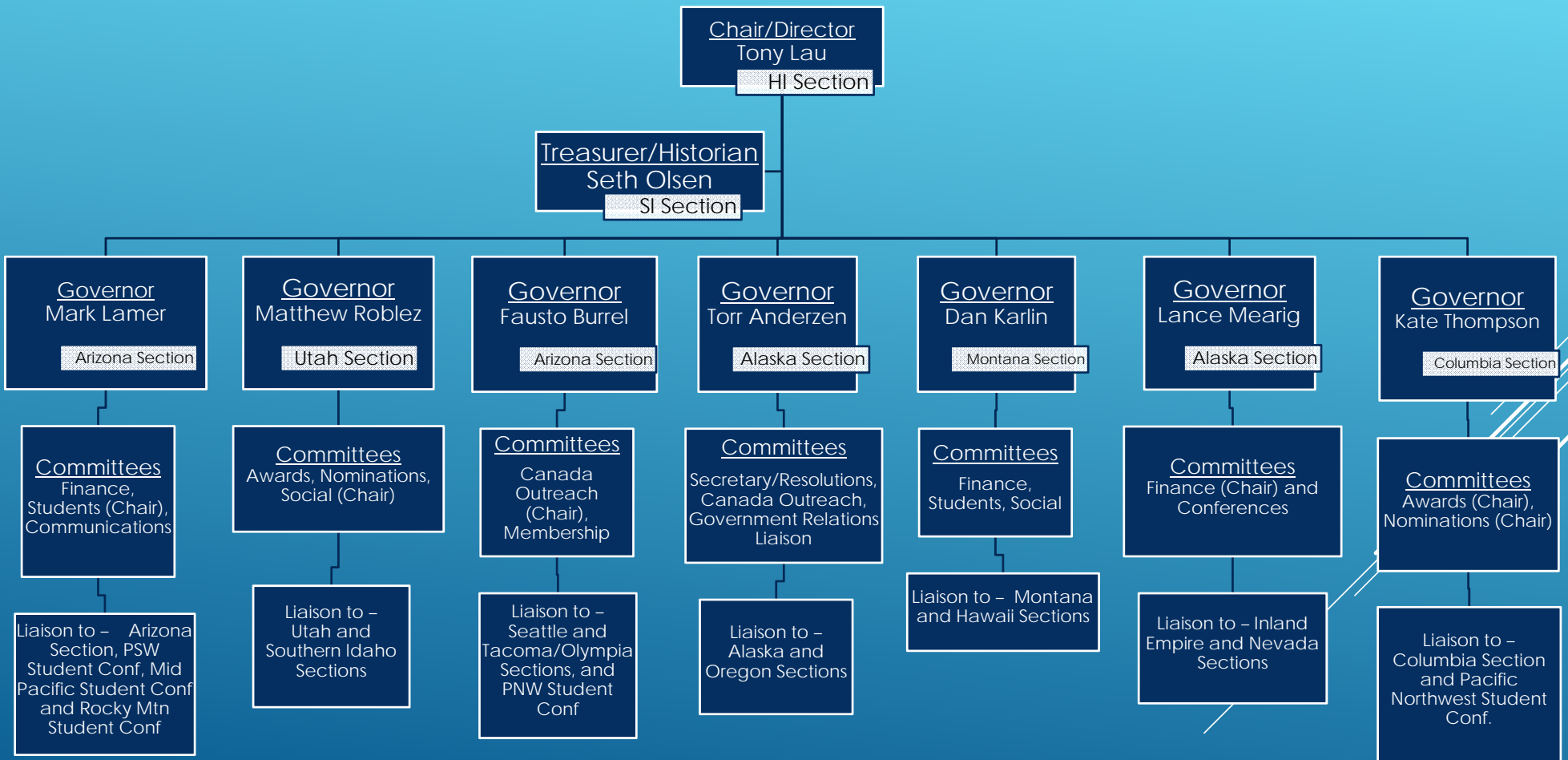
There are **3**
Region 8
Members on
the BOD!



REGION 8 BOARD OF GOVERNORS

- Purpose
 - Help you matter more and enable you to make a bigger difference
 - Goal
 - To advance the civil engineering profession by serving the Members of Region 8 as an extension of the Board of Direction
 - Duties
 - Provide advice to the Society Board of Direction
 - Manage the affairs of Region 8
 - Make visits to Sections, Branches, and other Region 8 Organizational Entities
- 

ASCE Region 8 Organizational Chart 2020-2021





Our fearless leader...

SOCIETY DIRECTOR - REGION 8
TONY LAU, P.E., ENV SP, F.ASCE

NAVFAC HAWAII CIVIL ENGINEERING DESIGN
BRANCH MANAGER

ASCE SOCIETY-LEVEL COMMITTEES

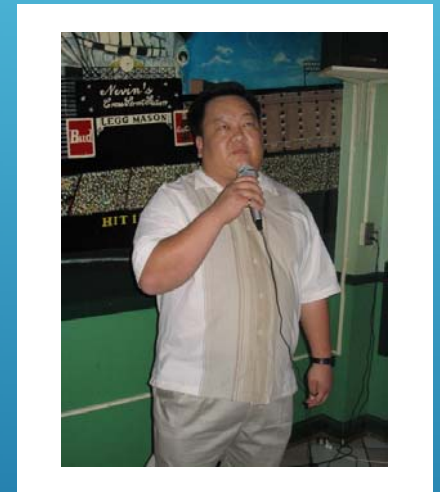
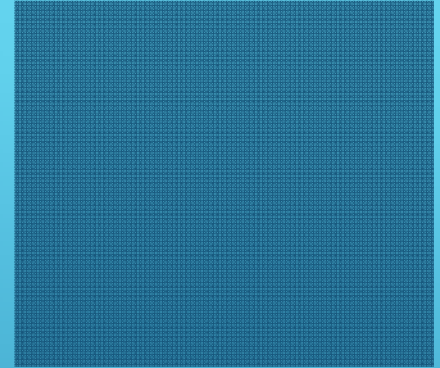
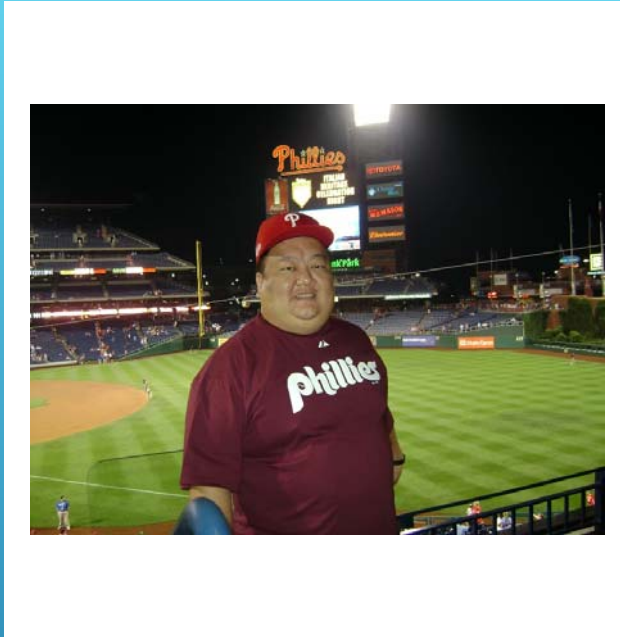
- PROGRAM AND FINANCE
- LEADER AND TRAINING
- TASK COMMITTEE ON INSTITUTES AND OPERATIONS

HONOLULU, HI

SOCIETY DIRECTOR REGION 8 TONY LAU, P.E., ENV SP, F.ASCE

FUN FACTS:

- LOVES TO VISIT MAJOR LEAGUE BASEBALL (MLB) BALL PARKS AND WATCHING GAMES. HE ONCE WATCHED TWO MLB GAMES AT SEPARATE BALLPARKS IN ONE DAY.
- HIS GO TO KARAOKE SONG IS "TRAVELING MAN" BY RICKY NELSON
- ORIGINATED THE TERM #ASCEEats
- THREW A NO-HITTER IN SLOW PITCH SOFTBALL





“Best: I’m usually careful and take my time. Worst: I’m sometimes too careful and take too much time!”

SETH OLSEN, P.E., M.ASCE

Treasurer & Historian

SENIOR GEOTECHNICAL ENGINEER, INNOVATE GEOTECHNICAL
BOISE, IDAHO



MEET YOUR REGION 8 GOVERNORS

FLORENCE CHING, P.E., M.ASCE
REGION 8 GOVERNOR

SUPERVISORY PROGRAM MANAGER / U.S. ARMY CORPS OF
ENGINEERS HONOLULU DISTRICT MILITARY BRANCH

HONOLULU, HAWAII



FLORENCE CHING, P.E., M.ASCE REGION 8 GOVERNOR

FUN FACTS:

- INTERNED AT THE FBI (THE BACKGROUND CHECK TOOK LONGER THAN HER TO COMPLETE HER INTERNSHIP)
- LIVES IN HAWAII AND LOVES THE OCEAN, BUT HATES DEALING WITH SAND AND IS PARANOID IF SHE CAN'T SEE THE OCEAN BOTTOM
- AFTER FLYING IN HELICOPTERS FOR WORK SHE REALIZED THAT SHE IS CLAUSTROPHOBIC AND CANNOT BE STRAPPED IN THE MIDDLE SEAT





FRED NELSON, P.E. F.ASCE
REGION 8 GOVERNOR

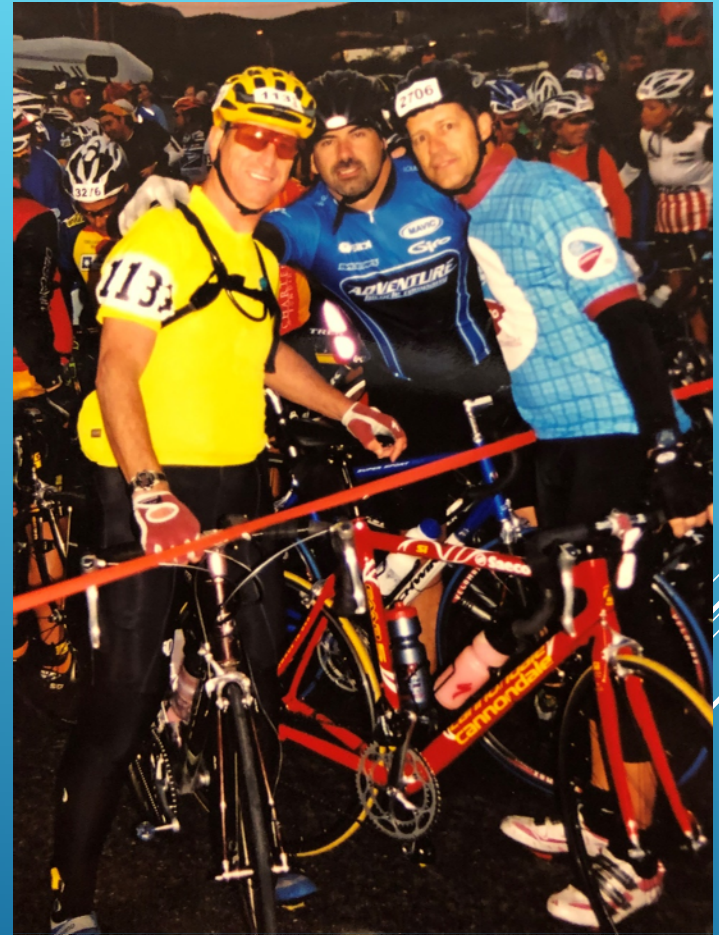
VICE PRESIDENT AND FORENSIC
DEPARTMENT DIRECTOR OF
GERVASIO & ASSOC., INC.

PHOENIX, ARIZONA

FRED NELSON, P.E. M.ASCE REGION 8 GOVERNOR

FUN FACTS:

- 8 BRADY BUNCH CHILDREN AND 20 GRANDCHILDREN
- HAS RIDDEN HIS BIKE OVER 200 MILES IN A SINGLE DAY 3 TIMES
- STILL HOLDS THE TUCSON HIGH SCHOOL RECORD FOR THE MILE





DARREN "STILL HIP" HIPPENSTIEL, P.E.,
M.ASCE
REGION 8 GOVERNOR

ASSOCIATE ENGINEER, KITTELSON & ASSOCIATES, INC.

PORTLAND, OREGON



DARREN "STILL HIP" HIPPENSTIEL, P.E., M.ASCE REGION 8 GOVERNOR

FUN FACTS:

- RIDES MOTORCYCLES
- WENT SKYDIVING FOR THE 1ST TIME ON HIS 40TH BIRTHDAY
- OVER 10 YEARS ON PLANNING COMMITTEE FOR E WEEK PROGRAM FOR HIGH SCHOOL STUDENTS

LANCE MEARIG, P.E., M.ASCE
REGION 8 GOVERNOR

SOUTHCOAST REGION DIRECTOR,
ALASKA DOT & PF

ASSIGNED SECTIONS – NEVADA AND INLAND EMPIRE

JUNEAU, ALASKA



LANCE MEARIG, P.E., M.ASCE REGION 8 GOVERNOR

FUN FACTS:

- HE HAS 5 GRANDKIDS
- LOVES THE RAIN IN SE ALASKA, HATES IT WHEN IT FOLLOWS HIM WHEN HE TRAVELS





KATE THOMPSON, P.E., M.ASCE
REGION 8 GOVERNOR

PROJECT ENGINEER, ANDERSON PERRY & ASSOCIATES
ASSIGNED SECTIONS – COLUMBIA

WALLA WALLA, WASHINGTON

KATE THOMPSON, P.E., M.ASCE REGION 8 GOVERNOR

FUN FACT:

- DECIDED TO ADD TO THE CHAOS OF THE YEAR WITH A NEW PUPPY
- WENT BUNGEE JUMPING NEAR PORTLAND AT THE HIGHEST JUMP SITE IN THE US
- WALLA WALL IS THE LARGEST TOWN SHE HAS LIVED IN

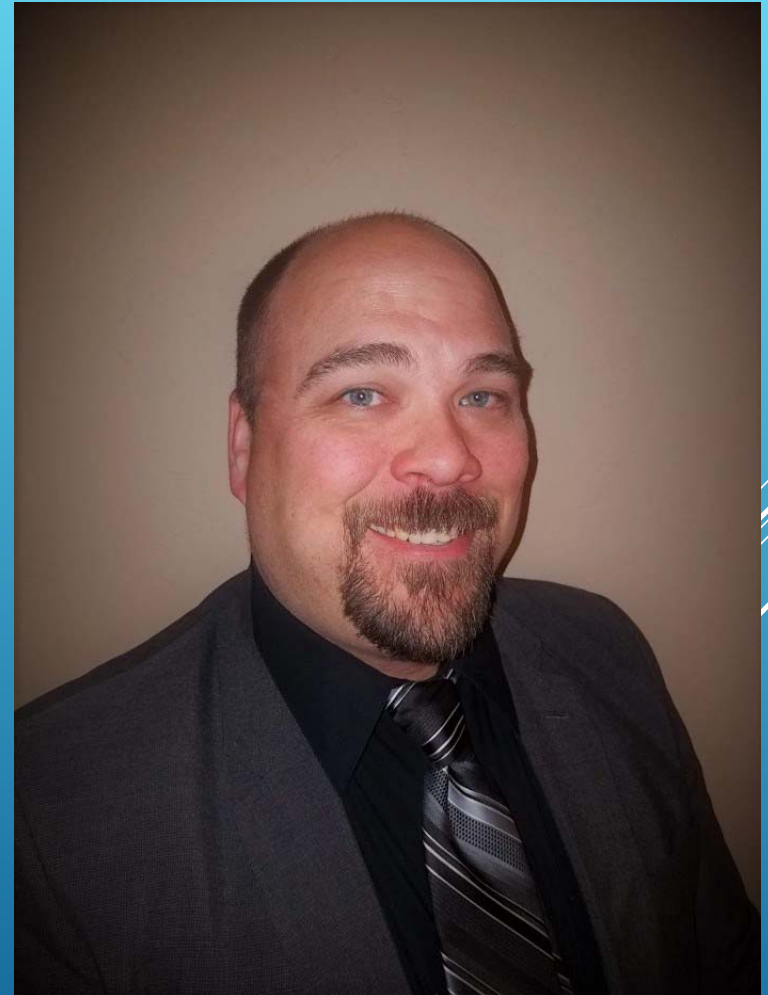


MARK LAMER, P.E., M.ASCE
REGION 8 GOVERNOR

NORTHERN ARIZONA UNIVERSITY
DEPARTMENT OF CIVIL ENGINEERING,
CONSTRUCTION MANAGEMENT AND
ENVIRONMENTAL ENGINEERING FACULTY

ASSIGNED SECTIONS – ARIZONA

FLAGSTAFF, ARIZONA



MARCK LAMER, P.E., M.ASCE REGION 8 GOVERNOR

FUN FACTS:

- ABOUT A YEAR AGO HE BROKE HIS ADDICTION TO VIRTUAL HORSE RACING
- LOVES RIVER RUNNING
- HE WAS "SHOT" IN THE STOMACH WITH A 22 AS A KID





MATTHEW ROBLEZ, S.E. M.ASCE
REGION 8 GOVERNOR

MCNEIL ENGINEERING – OWNER/SENIOR
ENGINEER

ASSIGNED SECTIONS – UTAH AND
SOUTHERN IDAHO

SOUTH SALT LAKE CITY, UTAH



MATTHEW ROBLEZ, S.E. M.ASCE REGION 8 GOVERNOR

FUN FACTS:

- OWN'S A 1981 DELOREAN DMC-12
- HE'S A LICENSED PROFESSIONAL WRESTLER
- HAS BEEN IN ASCE LEADERSHIP AT DIFFERENT LEVELS SINCE 1988



DAN KARLIN, P.E., M.ASCE
REGION 8 GOVERNOR

COUNTY ENGINEER, LEWIS AND CLARK COUNTY
ASSIGNED SECTIONS – MONTANA AND HAWAII

HELENA, MONTANA

DAN KARLIN, P.E. M.ASCE REGION 8 GOVERNOR

FUN FACTS:

- GREW UP IN THE LARGEST WOOL PRODUCING COUNTY IN THE USA. THEIR HIGH SCHOOL MASCOT WAS THE SHEEPHERDER
- IN 5TH GRADE HIS HE WON A NASA-NSTA SPACE SCIENCE STUDENT INVOLVEMENT PROGRAM FUTURE AIRCRAFT/SPACE CRAFT DESIGN COMPETITION
- JACK OF ALL TRADES, MASTER OF NONE



FAUSTO BURRUEL, P.E., MPA, M.ASCE
REGION 8 GOVERNOR

DEPUTY DIRECTOR PUBLIC WORKS, TOWN OF MARANA

ASSIGNED SECTIONS – SEATTLE AND TACOMA OLYMPIA

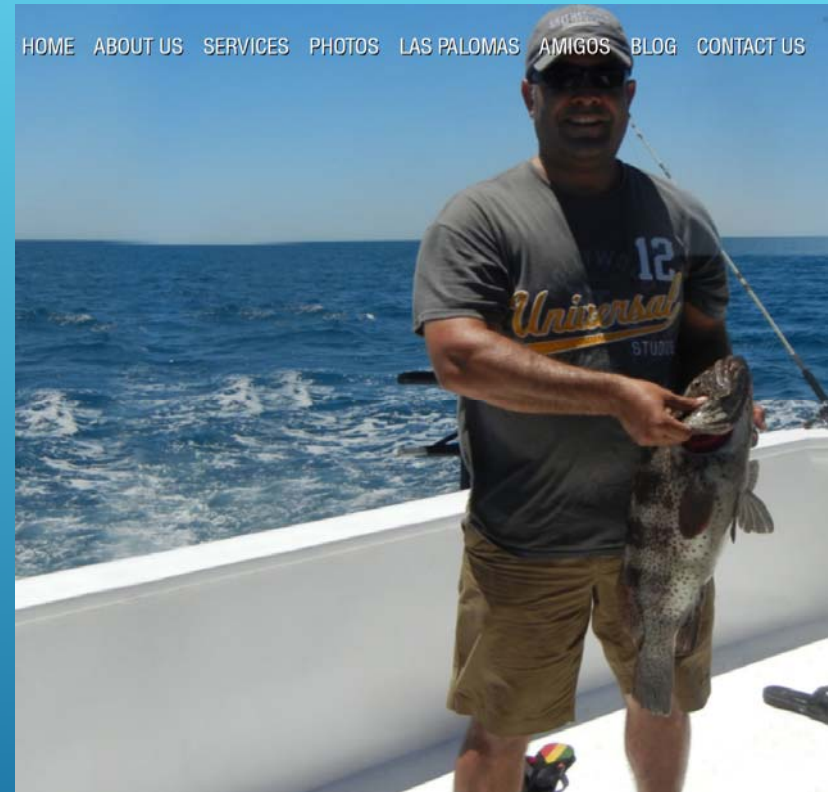
MARANA, ARIZONA



FAUSTO BURRUEL, P.E., MPA, M.ASCE REGION 8 GOVERNOR

FUN FACTS:

- HE'S A BAND DAD – HE GETS VOLUNTOLD TO BUILD PROPS, HAUL EQUIPMENT AND HELP DURING EVENTS
- HIS PICTURE IS BEING USED ON A FISHING CHARTER WEBSITE
- IN HIGH SCHOOL HE TRIED OUT FOR A MINOR ROLE IN A MUSICAL, AND ENDED UP GETTING CASTED AS THE LEAD





TOR ANDERZEN, P.E., F.ASCE
REGION 8 GOVERNOR

SENIOR AVIATION ENGINEER, HDL ENGINEERING CONSULTANTS
ASSIGNED SECTIONS – ALASKA AND OREGON

PALMER, ALASKA



TOR ANDERZEN, P.E. F.ASCE REGION 8 GOVERNOR

FUN FACTS:

- LOVES FISHING, BUT IS ALLERGIC TO FISH
- GOT A CONCUSSION PLAYING BOTH TENNIS AND VOLLEYBALL
- RIDES THE UNICYCLE



REGION 8 ASSEMBLY

- Purpose
 - Help you matter more and enable you to make a bigger difference
- Goal
 - Increase value to Region 8 members
- Duties
 - The Assembly shall convene as designated by the Region 8 Board of Governors. It shall conduct business as set forth in the agenda established by the Region 8 Board of Governors

REGION 8 ASSEMBLY

➤ Composition

- Chaired by Region 8 Director / or Vice Chair
- Seven Region 8 Governors
- One Official Representative and Alternate Representative from each Region 8 Section
- One Official Representative and Alternate Representative from Western Regional Younger Member Council (WRYMC)

REGION 8 ASSEMBLY

REGION 8 ASSEMBLY

The Annual Meeting will provide a forum for presentation of Section Annual Reports and other matters between the Sections within the Region. The Retreat/Planning Meeting will provide a forum for the strategic planning of the activities of the Region.

The Assembly may accept Resolutions from the general membership of Region 8 or draft their own Resolutions for approval and presentation to the RBOG.

Assembly members will be called on to participate on Committees created by the RBOG. Unless funding is available from the Region 8 Board of Governors, costs associated with these Committee assignments will be borne by the individual member or their sponsoring Section.

REGION 8 BOG AND ASSEMBLY

- 2021 Winter/Spring Planning Meeting
 - Las Vegas, Nevada (tentatively)
 - Thursday – Region 8 BOG
 - February 18, 2021
 - Friday and Saturday – Assembly
 - February 19-20, 2021
 - Friday and Saturday Region 8 and 9 MRLC
 - July 9-10, 2021
- 2021 Region 8 and 9 MRLC will be held in Orange County, California

#REGION8ISGREAT

THANK YOU!