



"advance the Civil Engineering profession by serving the members of Region 8 as an extension of the Board of Direction"

Get out to Vote: Participate in the 2018 Election Cycle

The Election Season is Fast Approaching - Civil Engineers Need to Be Involved

This election cycle is a good time to get engaged in public policy. It's an opportunity to not only get to know your elected officials better, but also to become a more educated voter. Many candidates will be reaching out to their voters to learn about their concerns for the next legislative cycle and chances are their research may include a call to your Section or Branch. This offers an opportunity to educate a potential elected leader and increase their interest in, and understanding of, infrastructure issues.

While ASCE Sections and Branches cannot endorse candidates or make campaign contributions, there are other ways to become engaged. You can host panel discussions or open forums on infrastructure to which you invite all candidates to share their ideas and get feedback from the public and our members. In doing so, it is critically important that your invitation be extended to all candidates in the field – they don't all have to participate, but they must all be invited. If you want help in planning an event like this, you can reach out to [ASCE's State Government Relations](#). ASCE has resources to help you in the prepare and plan.

If you're just looking to be a more educated voter, I encourage you to attend panel discussions arranged by another group, such as your local Chamber of Commerce. If you're not a member, find a public forum or ask a member if you can attend as their guest. When attending events, inform yourself by reviewing the latest state report card and the *2017 Infrastructure Report Card*, and reach out to ASCE's staff to ask for the latest briefing documents. Take any opportunity to ask questions, to help inform the discussion and work towards building a stronger community by reminding candidates of the importance of keeping up with our infrastructure needs.

In many states, candidates won't be the only thing on the ballot. Make sure you're keeping an eye out for any ballot measures (sometimes called referendums or propositions) that relate to infrastructure. Be sure to educate yourself on these questions which appear on the bottom of your ballot. They can be just as critical to funding our infrastructure as electing the governing body.

Last, but not least, ensure you are registered to vote. If you aren't, visit your city or county board of elections website to find out how to register. If you're registered, learn where to go to vote on Election Day and whether you have early or alternative voting options – like vote by mail or online voting.

I hope that you'll participate in this year's Election Cycle and also consider becoming an [ASCE Key Contact](#) and make advocacy a year-round habit.

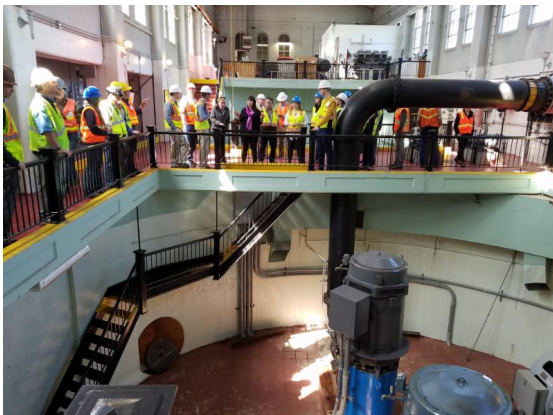
Inland Empire Update

The Inland Empire Section continues to grow and build upon its previous accomplishments. Continuing from previous years, our membership numbers continue to increase. Most of the growth is attributed to the re-start of our Younger Member Forum late last year. There has also been an increase in monthly meeting attendance, due in large part to different meeting venues and interesting speakers and tours. Recent meetings have included tours of the Regional Transit System Facilities, Spokane's Up River Dam, and ongoing CSO projects.



More than 60 members and guests braved the cold and the sounds of rushing water behind them to hear about construction of a 2.2 million gallon concrete holding tank as part of Spokane's Combined Sewer Overflow Project. A park and plaza will sit atop the structure's roof when the project is complete allowing visitors an ideal venue to enjoy the sights and sounds of the urban waterfalls.

John Sawyers, Section Past President, explains how the 'Big Board' is used to manage Spokane's network of wells, pumps and tanks to provide more than 150 million gallons of clean, safe drinking water to more than 200,000 customers daily.



Two of Spokane's Water Managers discuss the dam's ability to generate more than 70 million kWh annually to power water system pumps and still sell enough power to satisfy 4,500 households every year.

The Inland Empire Section continues to promote educational opportunities with two annual seminars offering PDHs. The attendance for both the "Permitting Near Waterways" and "Managing Projects and Managing Your Career" Seminars was near capacity. We are also proud to be one of the few Sections to pledge funds for the purchase of Dream Big for every public elementary and middle school within our boundaries.

We were honored to have Society President-Elect Kemper attend our annual recognition banquet in January. One of the unique features of the evening was having President Elect Kemper spend an hour with nearly 40 Student Chapter Members from our three institutions, Gonzaga University, Washington State University and the University of Idaho, discussing their needs and expectations.

September 2018 will see the Region 8 Fall Assembly being held in Spokane with a unique opportunity to tour the inner workings of the Grand Coulee Dam.

Bill Meeks, P.E., M.ASCE
President, ASCE Inland Empire Section

Golden Spike 150th Anniversary Symposium

ASCE History and Heritage Committee



CALL FOR PAPERS

May 6, 2019 at the Sheraton Grand Hotel, Sacramento, California
Special Hotel Rate \$145/night

Submit max 400 word abstract no later than August 24, 2018

The following information must be included at the top of the abstract:

Full Name, Full Address, Email, Title of paper

Submit abstracts to chuck.spinks@outlook.com

Authors will be notified of acceptance of abstract by ASCE History and Heritage Committee by September 7, 2018. Final draft paper due for review by Committee by November 23, 2018. Comments will be provided by Dec. 14, 2018, and Final Papers will be due by March 1, 2019.

Potential Topics for Papers

- The Civil Engineers that Built the First Transcontinental Railroad.
- Surveying and Mapping in the 19th Century.
- Railroad Construction Methods in the 19th Century.
- Early 19th Century Engineering Education: The Rensseluer Institute (RPI) and the Civil Engineering education of Theodore Judah and Edwin Crocker.
- Politics and the 1862 and 1864 Pacific Railroad Acts.
- Social Impacts of the Completion of the First Transcontinental Railroad.
- The Development of 19th Century Railroad Technology.

ASCE Staff Contact

[Jennifer Lawrence, Aff.M.ASCE](#)

Symposium Chair

[Chuck Spinks P.E., M.ASCE](#)

Region 8 Fall Board of Governors & Assembly Meeting

The Region 8 Fall Assembly and Board of Governors Fall Planning Meeting will be held on the campus of Gonzaga University in Spokane, WA from Thursday, September 6th (Board of Governors only) to Saturday, September 8th. The meeting will conclude on Saturday afternoon with a custom guided tour of the Powerhouse of Grand Coulee Dam, which is generally closed to the general public. Expected attendees are the President or President-elect of the respective Region 8 Sections. Other leaders from the Sections or Branches may also attend, but they will be billed approximately \$40 to cover the cost of their food and refreshments. The exact cost for additional attendees will not be available until after all bills have been received and paid. Prospective attendees are directed to the following link to get information about registration and reserving a room at the conference rate of \$89 per night at the Red Lion River Inn Hotel.

[More Information](#)

September 6th to 8th, 2018, Spokane, Washington

General Meeting Details

Thursday, September 6th (Gonzaga)

8:00 AM to 4:00 PM	Board of Governor's Meeting	PACCAR PC 203 Conference Room
7:00 PM	Group Dinner	Location TBD

Friday, September 7th, (Gonzaga)

8:00 AM to 12 :00 PM	Region 8 Assembly Meeting	ROSAUR 230 Classroom
12:00 PM to 2:00 PM	Gonazaga Tour	Start Location TBD
2:00 PM to 5:00 PM	Region 8 Assemly Meeting	ROSAUR 230 Classroom
7:00 PM	Group Dinner	Location TBD

Saturday, September 8th (Gonzaga)

7:00 AM to 12:00 PM	Region 8 Asembly Meeting	PACCAR 007 Classroom
1:00 PM to 2:00 PM	Board of Governor's Meeting	Location TBD
2:00 PM	Leave for Grand Coulee Dam	See details below

Lodging

Hotel RL (Red Lion)
303 W North River Dr.
Spokane, WA 99201

14 minute drive from Spokane International Airport
34 minute bus ride from Spokane International Airport (Route 60, check STA route schedule for updates)

Special group rate at \$89.00 per night (breakfast included). Special rate may extend into the weekend if you request so.

Call 800-RED LION (733-5466) and provide group code "REGI0905" (zero-nine-zero-five)

Or use the [booking link](#).

Engineering Tour: Grand Coulee Dam Tour

Saturday, September 8th (afternoon)

About 2 hours west of Spokane

[Grand Coulee Dam Tour Information](#)

[More Information About the Dam](#)

Registration

[Register Here](#)

Region 8 Calendar of Upcoming Events

- Region 8 Board of Governors Meeting, Gonzaga University, Spokane, WA, Thursday, September 6, 2018
- Region 8 Fall Assembly Meeting, Gonzaga University, Spokane, WA, Friday-Saturday September 7-8, 2018
- ASCE Presidents and Governors Forum, ASCE Headquarters, Reston, VA, Sunday-Monday September 23-24, 2018
- Region 8 Board of Governors Meeting at Region 8-9 Multi-Region Leadership Conference (MRLC), Hilton Hawaiian Village, Honolulu, HI, Thursday March 7, 2019
- ASCE Region 8 Assembly Meeting at Region 8-9 Multi-Region Leadership Conference (MRLC), Location TBD, Honolulu, HI, Thursday March 7, 2019
- Region 8-9 MRLC and Younger Member Forum, Hilton Hawaiian Village, Honolulu, HI, Friday-Saturday, March 8-9, 2019

Visit [Region 8 Events](#) for more information.
