



## Director's Corner

**Marsia Geldert Murphey, PE,  
F.ASCE**

I want you all to know how honored and humbled I am that you have entrusted me with the responsibility to represent our wonderful heartland Region at the Society level. My mission while serving you all in this role is to provide excellent service, inspiration and engagement.

It really is a very exciting time for all of us in ASCE and I will highlight some milestones we have reached and will reach in the very near future in 2017 that prompts my enthusiasm.

Our first impressive milestone is the premiere of the giant screen movie Dream Big. The first showing was on February 17th at the Lockheed Martin IMAX Theater at the National Air & Space museum in Washington D.C. This is an ASCE initiative that was developed in partnership with MacGillivray Freeman Films, and presented by the Bechtel Corporation. The reviews have been very positive. Here is an excerpt from Variety Magazine: "Narrated by Jeff Bridges in his inimitable drawl, the film casts those who build, design, invent and construct as pioneers who harness the "power of imagination" in order to "enhance the human experience." And it immediately visualizes such notions via a rapturous 3D tracking shot out of, and then around, the International Space Station, a monument to innovation and collaboration that's allowed us, for the first time in history, to actually see our world." There are showings currently scheduled all over the United States, Canada and Mexico. You can find the screening locations here:

<http://www.dreambigfilm.com/theatres/>. If your state does not have a screening scheduled, please reach out to me or your Governor and let's work on getting a screening booked. This movie is just the first phase of the educational program associated with Dream Big that includes a robust K-12 outreach program.

Next, ASCE just released the 2016 Edition of ASCE 7-16: the minimum design loads and associated criteria for buildings and

## Region 7 Board of Governors



Our Region 7 Board of Governors is here to connect you, the ASCE members of Region 7, to ASCE at the Society level. You can learn more about each of us on the "Contacts" tab of our [Region 7 Website](#), and you can contact us via the contact form at the bottom of the "About" tab on the website. We want to hear from you!

- Marsia Geldert-Murphey, P.E., F.ASCE, Director/Chair
- Scott Asher, P.E., M.ASCE
- Erin Steever, P.E., M.ASCE
- Aaron Frits, P.E., ENV SP, M.ASCE
- Elise Ibendahl, P.E., ENV SP, M.ASCE
- Jeffrey Young, P.E., M.ASCE
- Gene Rovak, P.E., F.ASCE
- Edward Stafford, P.E., PTOE, F.ASCE

other structures for structural design. The standard has developed loading criteria for assuring safety, serviceability, and integrity which are applicable to a wide class of construction technologies. Here is the link for more information on ASCE 7-16: <http://www.asce.org/structural-engineering/asce-7-and-sei-standards/>

And lastly, on Thursday, March 9 in Washington, D.C. ASCE's Committee on America's Infrastructure released the 2017 Infrastructure Report Card. Every four years since 1988 ASCE conducts an all-inclusive assessment of current infrastructure conditions and needs, assigns a grade, and makes recommendations on solutions to raise the grades. The media attention and mentions of the ASCE report card are considerable. The Report Card has an app that you can download and links to the state report cards for the states that have prepared them. This provides our members a very effective tool when we meet with state and federal legislators to advocate for improving our nation's infrastructure.



Director Geldert-Murphey and Governor Ibendahl at the Dream Big Sneak Peek held at the Varsity Theater with the 2017 MRLC in Minneapolis, MN

In closing, I wanted to show the diverse and impactful milestones our Society is achieving to advance our profession. Just this year we have release a movie and initiated a program that informs the public about the important work we civil engineers carry out;we have an important vehicle to inspire young people to consider a career in engineering, and we have developed an educational outreach program. We have released an updated structural design standard that is developed by the structural engineering community. And we have continued to provide a tool, the Infrastructure Report Card, to empower our members to educate Congress and state legislatures on taking positive action on matters that affect civil engineers. Wow, I think it would be challenging to find another professional organization that has accomplished as much this year.

Please contact me or any of the Governors and let us know what we can do to more effectively support you at the Sections, Branches or Student Chapters. Our mission is to serve you all for the betterment of our profession and Society.

Marsia Geldert Murphey, Region 7 Director



## *Multi-Region Leadership Conference, February 2017*

This year's Multi-Region Leadership Conference (MRLC) for Regions 3, 6, and 7 was held in Minneapolis, MN on February 3&4, 2017. Our Region 7 Sections, Branches, Younger Members, and Student Chapters sent delegates to the meeting for collaboration, leadership training, and information sharing.

The Region 7 Board of Governors concurrently had their Board meeting on Thursday afternoon February 2. One outcome of our meeting was a desire to assess our Region's needs as we plan for the future. We will be reaching out to you soon with a survey to assess how Region 7 can meet your needs. The Board of  
[ASCE Region 7 Newsletter, Issue 2017.1 • Page 2](#)

Governors also had the opportunity to meet with the two candidates who will be on this spring's Society ballot for President-Elect. All Region 7 attendees met together on Friday, February 3, and learned more about the Region's role in acting as a conduit between Sections/Branches, Younger Members, Students, and the Society, and had a chance to discuss successes and challenges among those in the same geographic state. Friday night, there was an opportunity to view a sneak peak of the Dream Big movie at a red-carpet gala at the Varsity Theater, and the Younger Members learned how to go Curling Saturday evening.



**Dream Big Sneak Peak Gala at the Varsity Theater**



**Region 7 Breakout Session at MRLC**



## *Congratulations, Nebraska: 100 Years!*

The Nebraska Section is 100 years young! The Centennial Gala event will be at the Henry Doorly Zoo and Aquarium in Omaha, NE on May 18<sup>th</sup>. A public outreach event was held at the Omaha Children's Museum in January, and another is planned at the Lincoln Children's Museum in April. Student events are planned for both UNL and UNO this year as well. You can follow Nebraska's celebrations

online at <http://www.neasce.org/news/centennial.html>

On Wednesday, February 8, 2017, Governor Pete Ricketts signed a Proclamation recognizing 2017 as the Centennial year of the Nebraska Section. John Smith, P.E., M.ASCE, spoke on behalf of the Section during the signing in the Warner Chamber of the Nebraska State Capitol. He was joined by Bill Arneson, P.E., M.ASCE (Legislative Affairs, Section President 1990); Greg Seib, P.E., M.ASCE (Vice President); and Marie Stamm, P.E., M.ASCE (Director, Section President, 2008-2009).



On Saturday, January 28, 2017, the Nebraska Section hosted an outreach event at the Omaha Children's Museum. Between 9am and 5pm, over 400 kids and their families participated. They made gumdrop domes (toothpicks and gumdrops or marshmallows), played with Keva Planks, and used paper to make towers. NEASCE distributed drawstring backpacks with handouts on Civil Engineering, stickers, building blocks (Duplo and Lego type), and more. Thanks to all those who attended

(volunteers and participants), with special thanks to Shannon DeVivo, P.E., M.ASCE (Section President 2012-2013) for coordinating.

## *2017 Grant Awards*

Region 7 is excited to support Student, Section and Branch, and Younger Member activities throughout the Region. The grant program's key focus is on one-time events that provide value to our ASCE membership, and we applaud all the work that our Region members do throughout the year to advance the profession of Civil Engineering.

To date, 2017 Region 7 Grant awardees include:

- Dream Big event grants were given to Sections/Branches in St. Louis, Nebraska, Colorado, Kansas City, and Iowa
- The Nebraska Section was awarded a grant to support their Centennial Celebration
- The Student Chapter at Southern Illinois University at Carbondale was awarded a grant to support a footbridge construction project at the Touch of Nature Environmental Center
- The University of Wyoming Student Chapter was awarded a grant to support tool kits for the steel bridge team.

## Region 7 Board of Governor Elections and At-Large Appointment

Region Governors serve 3-year terms. One elected Governor position in both St. Louis and Colorado and one Governor-At-Large appointment are open this election cycle; voting begins on May 1 and ends on June 1.

### Governor At-Large Expressions of Interest

If you would like to express interest in the appointed Governor At-Large position, which is selected by the Region 7 Board, please send a maximum 200-word Vision Statement, a maximum 200-word Biographical Statement, and head-shot photograph to Director Marsia Geldert-Murphey at [mmurphey@gonzalezcos.com](mailto:mmurphey@gonzalezcos.com) by **April 15**. Director Geldert-Murphey can provide interested candidates with templates for these documents upon request.

### St. Louis Governor Election: Meet our Two Candidates

Melantha Norton and Dale Smith will be on the Region 7 Ballot to serve as the Region Governor from St. Louis. Voting is open to members at the grade of Associate or above who have paid their dues no later than April 1 and have a valid email address on file. Eligible voters will access the ballot with their ASCE login credentials. Meet our candidates!



*Dale Smith, F. ASCE, Past-President St. Louis Section*

I believe civil engineers are critical to the future of our civilization. ASCE provides one conduit for developing future civil engineers. I am committed to energetically working with high schools and colleges to attract young, sharp minds towards civil engineering by engaging with and visiting schools in Region 7. As a Region 7 governor I will advocate the connection between civil engineering and infrastructure improvements needed to maintain and expand our economy as an attraction to new civil engineers.



*Melantha Norton, M. ASCE, St. Louis Section Diversity & Inclusion Chair*

ASCE's Vision 2025 reiterates the ASCE mission's idea of Civil engineers as global leaders, stating that Civil engineers are trusted leaders for a modern world: master builders, stewards of the environment, innovators, managers of risk, and leaders in public policy. Some reoccurring themes I found in the ASCE's Vision for Civil Engineering 2025 were mentorship, diverse workforce, leadership, partnership opportunities, and sustainability. This vision resonates with me as it includes areas that I value and hope to promote in my career and service to ASCE.

To create global leaders, it is important that diversity and inclusion are at the forefront. I recently heard someone say that diversity is not a trending topic. I strongly agree with this statement and believe that ASCE recognizes this fact. Focusing on diversity and inclusion strategies plays a key role in attracting new engineers and retaining engineers. It helps to create leaders that can challenge the status quo based on their experiences – personally and professionally. It is my intention to inspire diversity and inclusion in the profession and ASCE. A diverse workforce and inclusive environment will create a sustainable

organization and profession. I am enthused by the partnership between ASCE and NSBE and am hopeful that more of these types of partnerships are in ASCE's future.

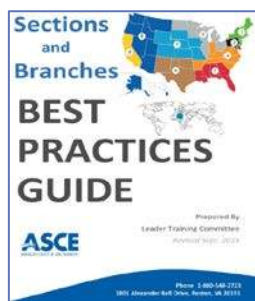
## Colorado Governor Election: Meet our Candidate



*Serkan Sengul, PE, M.ASCE – Past-President Colorado Section*

As an ASCE Region 7 Governor, I will be a strong advocate of the ASCE strategy to emphasize the importance of infrastructure improvements/replacements, while maintaining a strong stance on sustainable design in all phases of the civil engineering industry. I will guide the Section and Branch Officers to enhance and maximize service to our members. I will accomplish this by opening the communication lines between the Sections and Branches located in different states, and assist the Sections and Branches to discuss their approaches for member satisfaction, training, and community involvement. I will also dedicate sufficient time and resources to assist with the professional development of our members.

## Section & Branch Best Practice Resources



Did you know that a Best Practices Manual is available at the Geographic Services Region, Section, and Branch Resources page, courtesy of ASCE's Leader Training Committee? A series of recorded webinars on [Best Practices](#) is available on the resources page (scroll down to "Best Practices") along with the [Section and Branch Best Practices Guide](#). Did you know that you can also [submit your own best practices](#) to be included in the guide? This is a great way to share your successes with other Sections and Branches.

## Student Conferences and Competitions in Region 7

### Student Conferences

Student conferences include a business meeting, professional/technical presentations, competitions (technical papers, concrete canoe, geowall, steel bridge), social activities, and an awards banquet. Visit [www.asce.org/student\\_conferences/](http://www.asce.org/student_conferences/) to learn more and to find contact information for volunteering!

Conferences in or near Region 7 that include our very own Region 7 Students include:

**Mid-Continent:** University of Arkansas, April 21-22

**Midwest:** North Dakota State University, March 30-April 1

**Midwest Concrete Canoe:** University of Wisconsin, April 28-29

**Rocky Mountain:** University of Utah, April 6-8

### National Concrete Canoe Competition

ASCE will be holding its 30th Annual National Concrete Canoe Competition in your Region this summer!

**On June 17-19** the **Colorado School of Mines** in Golden, Colorado will host this national event which attracts over 300 students from all over the country. We welcome you and any alumni of the National Concrete Canoe Competition to join us at this exciting event. If you'd like to volunteer, please contact Diana Kane at [dkane@asce.org](mailto:dkane@asce.org).

## Welcome to Missouri State University!

By Dorothy Halbrook, MSU ASCE Student Chapter President

The Missouri State University student chapter of ASCE is excited to now be a fully recognized student chapter. We are a tight knit group who has grown together by working hard to accomplish our chapter goals. Although our program only has about 60 total students, we are proud to have gotten a lot of things done while having fun and meeting new people.



A significant accomplishment was just being accepted as a student chapter of ASCE. Thanks go out to Mike Winkler and Region 7 Governor Aaron Frits in addition to the people in Springfield who helped. Over the past year, we have expanded our program to include several tours in addition to volunteering and regular meetings. Tours include the Olmsted Locke and Dam in Olmsted, Illinois, an emergency sinkhole repair around the corner from our building where a pipe

failed, and a bridge deck before being poured on a major overpass here in Springfield. Thanks to our tour guides.

Our student chapter has always been involved in volunteering activities. Saturday February 18th we volunteered for the 4th year at Discover Engineering Day, an educational outreach event for K-6 students with around thirty activities. ASCE contributed three activities, edible concrete, concrete canoe information, and steel bridge team information. After seven stream clean-ups on Jordan Creek, which actually passes



directly under our building, we have begun the process of officially adopting this section of stream.

This spring expect more exciting things to come from the MSU student chapter including our 3rd steel bridge and 6th canoe. Thanks for your support and GO BEARS!



## Meet our Region 7 Leaders

Region 7 relies on volunteers at many levels-students, sections, branches, younger member groups, and our Board of Governors. This issue will focus on Section leaders from the Kansas City Section and our Region 7 Governor-At-Large, Elise Ibendahl.

*Elise Ibendahl, PE, ENV SP, CFM, M.ASCE Region 7 Governor-At-Large*



Elise Ibendahl was appointed as the Region 7 Governor-At-Large in 2015 and is serving her third year on the Region 7 Board of Directors. Elise graduated from Christian Brothers University in Memphis, TN with a Bachelor of Science degree in Civil Engineering in 1997 and a minor in Piano and Voice Performance. She has worked for CH2M for nearly 20 years where she is a Senior Technologist and specializes in flood risk management, hydraulic and hydrologic modeling, stormwater management, and sewer conveyance. She has held various regional and global technologist roles within CH2M, most recently as the Global Water Resources and Ecosystem Management Communications Lead.

Elise has been active in ASCE since her college years and was named the St. Louis Section's Outstanding Younger Member in 2006 and was part of the team that won the St. Louis Section's Project of the Year Award in 2004. After serving as a committee chair, she moved through the ranks within the St. Louis Section Board of Direction, ultimately serving as President. She is also a member of the Foundation Board of Direction for the Association of State Floodplain Managers (ASFPM), and is the Chair of the St. Louis Chapter of EWRI and is a member of the Society's Committee on Diversity and Inclusion.

Elise lives in the City of St. Louis, Missouri with her husband of 18 years, Stephen, who is a Landscape Architect and Sustainability Planner, and their son and two daughters in a 120-yr old Victorian house. Elise is deeply committed to STEM education in schools, and volunteers as a coach for the FIRST Lego League (FLL) program. When her spare time isn't filled with Lego Robotics, she exercises her musical talents as a full member in the critically acclaimed professional St. Louis Chamber Chorus and sings in the St. Margaret of Scotland Choir.

## Meet the Kansas City Section

The Kansas City Section has been busy with the joint luncheons, Dream Big planning, and Report Card planning, we hope ASCE has been satisfying to our membership. There has been good participation at our monthly luncheons, and we are continuing to find interesting topics from our speakers. The Kansas City Section website is always full of great information! Visit us at <http://www.kcengineers.org/>

In December, MSPE hosted us at the Grand Street Café where US Army Corps of Engineers' Colonel Guttormsen spoke on the mission of the Corps. In January, EWRI hosted us at the Café Trio where Jessica Veach of CDM Smith spoke on "Target Green West Marlborough, Greening the Gray: A Look at Design Through Construction".



Kansas City Section members are currently helping to lead the effort to prepare both the Missouri and Kansas ASCE Infrastructure Report Cards starting in the Spring of 2017, for the early 2018 release. Roster positions for the various categories are being filled. Our State governments need accurate and convincing information, clearly assembled, to escalate the concern and financial need.

The Kansas City Section of ASCE and the Kansas and Missouri sections of the Association of State Floodplain Managers (ASFPM) is hosting a 5K run as part of ASFPM's 2017 annual conference to be held in Kansas City. This joint event will be the first annual 5K designed to promote the ASB Bridge Kiosk which was completed in April of 2016. The ASB Bridge is recognized by ASCE as a National Historical Civil Engineering Landmark for being one of two double deck vertical-lift bridges ever built in the United States. The kiosk monuments appear as mock counterweights and they include informational panels of the history of civil engineering in the Kansas City metro and information panels for the bridge itself.



Feb. 15 was the Legislative Drive-in for the Kansas City and St. Louis Sections. Missouri ASCE members met with their respective Representatives and Senators to discuss infrastructure and STEM funding, qualifications based selection and engineering licensure. The transportation ball is in the House's court and the general consensus is a long term solution will likely not happen this session but there should be a task force formed that will include citizens and representatives of the engineering community. We cannot stress enough to be involved – contact your legislators and let them know your thoughts on what should be done. Remember that you can sign up on ASCE's web site as a Key Contact and receive email notices on bills in your state that have a direct impact on engineering.

## Kansas City Younger Members

**Toys for Tots:** The YMG had its annual Toys for Tots toy drive at its Monthly Meeting on December 6th. Around 25 members attended the event at Tanner's Bar & Grill. In exchange for donating a toy, members were given free appetizers and drinks and entered into a raffle.

**Friends of JCDS Volunteer Event:** 5 members of the YMG and 8 members of APWA volunteered at an event for Friends of Johnson County Developmental Supports (JCDS) on January 21st. JCDS helps to make wishes reality for thousands of our friends and neighbors who face daily challenges and adversity. The group worked on painting



living spaces in support of people with disabilities who are moving into a group house in Olathe. They taped trim, vacuumed, painted most rooms in the house, and assembled a desk for staff administration work. The four displaced disabled men, two of which use wheelchairs, moved into the residential house on January 24th.

**Mavericks Night:** The YMG had its annual Mavericks Night on January 27th. After enjoying a buffet at Buffalo Wild Wings, everyone headed over to Silverstein Eye Centers Arena to watch the Mavericks hockey game. Around 30 people attended the event. The Mavericks won 4-2!

**Expanding Your Horizons:** Members of the YMG volunteered at the Expanding Your Horizons conference on February 3rd. Girls in 6th-8th grade were given the opportunity to work with female STEM professionals doing STEM activities. The girls spent the majority of the evening in hands-on workshops that are designed and led by area women who want to help girls understand the joy of STEM studies and careers. For the



YMG hands-on workshop entitled "Bridging the Gap", the girls were educated about bridges, specifically suspension bridges. The girls were shown the 4'x1'x12' PVC/wood/chain suspension bridge where the YMG members explained the different components of a bridge and the basics of how a bridge is constructed. The second part of the activity gave the girls the opportunity to build their own suspension bridges out of crafting materials and test them their capacity by hanging loads.

**NAWIC Block Kids Building Competition:** 4 members of the YMG volunteered at the National Association of Women in Construction (NAWIC) Block Kids Building Competition on February 4th. This was the 28th annual competition hosted by NAWIC. Elementary students competed for trophies and Lego sets by constructing a commercial building using Legos, construction paper, aluminum foil, and a piece of string. The YMG attendees acted as judges for the competition and asked students questions about their structure and about their potential future careers.

## UMKC ASCE Student Chapter

For the first time, UMKC's ASCE student chapter participated in an inner city outreach called Saturday Academy. About 20 students from urban middle schools attended and learned about Civil Engineering through hands on activities. Four UMKC students volunteered and facilitated activities that encouraged innovative thinking. The middle schoolers built paper towers with newspaper, structures with toothpicks and marshmallows, and tables to hold up textbooks with paper. The younger students interacted with the



volunteers to learn more about the process of becoming an engineer and how they can apply their passions to their future jobs.

The UMKC steel bridge team is in the midst of fabrication and on schedule to compete at Regionals in April. The coming weeks will be used to complete connection fabrication and book travel for competition. Regionals are scheduled for April 21 and 22. The team still plans to complete construction in March and use the additional time before competition for practice and fine tuning.

## Kansas City Section Leaders

*John Blancett, PE, ENV SP, M ASCE, Kansas City Section President*



John received his BSCE and MSCE degree from the University of Missouri Kansas City. He is a Project Manager at HNTB where he works on a variety of Water Resources and Transportation projects. Recently he has been very involved in the City of Kansas City, Missouri – Water Services Department projects, such as their Annual Water Main Replacements, Transmission Main Design, and Sanitary Sewer OCP (Overflow Control Program). He is also involved in USACE Kansas City District and Mississippi DOT Stream Bank Stabilization projects. John taught the ASCE sponsored Hydraulics portion of the PE Review course at UMKC from 2011 to 2015. John taught Senior Design at UMKC from 2011 to 2016, where each year his students prepared a report and 90% plans for roadway widening and culvert replacement projects that were actually constructed, for Johnson County Kansas Public Works. John has been involved in the Kansas City Section, since 1994, and served as Membership Chair from 1999 to 2011, and then he was nominated to the Board. John grew up in SE Kansas City, and he now lives in Lee’s Summit, MO with his wife Melissa and his sons Alex (6) and Adam (3). He enjoys weekend trips traveling with his family to regional museums and parks. They regularly attend races at Kansas Speedway, hike the trails of Ha Ha Tonka State Park, and enjoy other various outdoor activities.

*Stephen Stinger, PE, Younger Member Group President, Kansas City Section*



Stephen Stinger is a Civil/Structural Engineer within Black & Veatch's global energy business. He works at Black & Veatch’s world headquarters in Overland Park, KS. Stephen is the son of Chuck and Marie Stinger. He was raised in Belton, MO and now lives in Kansas City, MO with his wife, Hannah. Stephen earned his Bachelors of Science in Civil Engineering from the University of Missouri – Columbia in May 2009 and his Masters of Science in Civil Engineering from the University of Missouri – Columbia in May 2011. He became a Professional Engineer in January 2015. He has worked at Black & Veatch for over 5 years.

Stephen has worked on the design of reinforced concrete foundations and structural steel superstructures. He has worked on multiple air quality control systems (AQCS), coal, combined cycle, nuclear, oil & gas and telecommunications projects. Stephen is actively involved in several organizations. He is the current President for the Mizzou Engineering Recent Alumni Development (RAD) Board. He is also the former

Lead Advisor and a current Advisor for the Black & Veatch Engineering Explorer Post which introduces high students to the various disciplines of engineering.

*Mohamad T. Ibrawish, P.E., Kansas City Section Director – Technical Committees/Secretary*



Mo received his BSCE degree from the University of Missouri-Columbia. He is a Senior Engineer at Geotechnology, Inc. where he works on variety of geotechnical explorations, analyses and assessment for shallow and deep foundations, pavements, settlement, karst conditions, retaining walls, slope and global stability problems and forensic engineering. On occasions, Mo teaches the field exploration portion of the Soil Mechanics class provided by University of Missouri-Kansas City. Mo has been involved with ASCE since college where he served as a secretary and then vice president for the UMKC chapter. He became more involved with the local chapter in 2008. Mo became a membership Chair in 2016. Mo grew up in Jordan and pursued a long dream of becoming an MU-tiger, moving to Missouri in 1995 and joining UMKC and then MU. He is active with the American Cancer Society (ACS) Chapter in Kansas City. He participated as the ASCE nominee for the ACS Shave to Save event in 2016, raising over \$6,000 in two months for the Hope Lodge House in Kansas City. He also enjoys archery, skeet shooting, soccer, and college sports.

*Paige Snow, EIT, Kansas City Section Dinner Co-Chair*



Paige graduated with a Bachelor of Science in Civil Engineering from the University of Missouri-Kansas City in May of 2016. Since graduation she has transitioned from being involved in her ASCE Student Chapter to being involved with the ASCE Kansas City Section and their Younger Member's Group. Paige has been with Black & Veatch since May of 2015 on their Power team. She has designed storm water systems, pavement, site grading, and other hydraulics related items for power and oil & gas projects as an intern and then as an Engineer in Training after graduation. She is currently on loan to Black & Veatch's Telecom team where she is learning how another business line works while working on fiber design. Paige grew up in a small town outside of Kansas City and now lives in Lee's Summit, MO with her husband Drew and their dog Eli. Paige enjoys cooking, working out, and time spent with her family and friends.

## *Join us on ASCE Collaborate*

ASCE Collaborate, a new online forum exclusively for Society members, is now live and starting to percolate with member comments, questions, and networking. ASCE Collaborate allows members to connect with other members, participate in discussions with subject matter experts; access a library of resources; and post images, videos and documents to share with others.

ASCE Collaborate's success hinges on member participation. Please explore the forum and its benefits. Logging in is easy – members just input their ASCE username and password at [asce.org](http://asce.org) or directly at

collaborate.asce.org. For questions about the ASCE Collaborate experience, contact ASCE Online Community Manager Veronique Nguyen at [vnguyen@asce.org](mailto:vnguyen@asce.org).

## *In Remembrance*

It is with great sadness that we share the news of the passing of Dr. Tim Philpot, the faculty advisor for the Missouri Science & Technology's student chapter. Dr. Philpot was the Associate Professor of Structural Engineering in the Civil, Architectural and Environmental Engineering department. He died Wednesday (Jan. 25, 2017). No immediate memorial service is planned. The family plans to hold a celebration of his life at a later date. Dr. Philpot was known for his work to develop a digital teaching tool called [MecMovies](#), which illustrates engineering concepts that are difficult to picture using only static images. Dr. Philpot taught several courses during his tenure at MS&T, including Mechanics of Materials, Structural Steel Design, Reinforced Concrete Design, Structural Analysis, and Statics. He earned a Ph.D. in Civil Engineering from Purdue University in 1992 and held a Master's of Engineering degree from Cornell University (1980) and a Bachelor of Science degree in Civil Engineering from the University of Kentucky in 1979.

## *ASCE Foundation: Region 7 Liaison Needed*

The ASCE Foundation is pressing its efforts to promote its programs and reach civil engineers at a more grassroots level through its Council of Trustees. The new members named by the Foundation's Board will serve as ambassadors to ASCE Sections, Branches, and overall Regions, with a goal of promoting local philanthropy. The Foundation seeks four representatives for Regions 5, 7, and 10; contact Foundation staff or Director Geldert-Murphey if you are interested.

We are pleased to learn about the Foundation's great fundraising progress during the ASCE Convention. Thanks to a matching gift challenge issued jointly by Foundation President Jon Magnusson and 2016 President Mark Woodson, a combined \$22,000 was raised to support vital ASCE programs.

### **Region 7 Awards Program Returns!**

**It's that time of year again! No, not for fish fries. No, not the return of March Madness. No, not spring break.**

**We're talking about the Region 7 Awards Program! Outstanding Younger Member, Outstanding Faculty Advisor, and Lifetime Achievement Award are open for submission.**

**Region 7 has distributed the FY2017 awards application forms to section, branch, and student leadership, and forms are also available on the Region 7 website.**

**<http://regions.asce.org/region7/awards>**

**Applications are due on April 30, 2017.**

**Apply early! We want to recognize those of you who are doing so much good for the Society and we love hearing from you.**

## ASCE President-Elect Official Nominees

“Meet” the Society’s official nominees for 2018 ASCE president-elect and VOTE between May 1 and June 1. Voting is open to members at the grade of Associate or above who have paid their dues no later than April 1 and have a valid email address on file. Eligible voters will access the ballot with their ASCE login credentials. The official nominees are Kancheepuram (Guna) N. Gunalan, Ph.D., P.E., D.GE., F.ASCE, and Robin A. Kemper, P.E., LEED AP, F.SEI, F.ASCE.

Learn more about Robin and Guna at

<http://news.asce.org/gunalan-kemper-tabbed-as-official-2018-asce-president-elect-nominees/> and

remember to **VOTE!**



## Congratulations to Region 7 National Award Winners!

**Mr. Yong G. Lai** has been selected by the Environmental and Water Resources Institute to receive the **2017 Karl Emil Hilgard Hydraulic Prize** *“For the paper, “Reservoir Turbidity Current Modeling with a Two-Dimensional Layer-Averaged Model,” Journal of Hydraulic Engineering, December 2015.”*

**Mr. Jianchun Victor Huang** has been selected by the Environmental and Water Resources Institute to receive the **2017 Karl Emil Hilgard Hydraulic Prize** *“For the paper, “Reservoir Turbidity Current Modeling with a Two-Dimensional Layer-Averaged Model,” Journal of Hydraulic Engineering, December 2015.”*

**John W. Van De Lindt, Ph.D., F.ASCE**, from the Colorado Section has been selected by the Committee on the Ernest E. Howard Award to receive the **2017 Ernest E. Howard Award** *“For his influential work to advance the understanding of the performance of wood buildings under extreme hazard loading.”*

**Dr. Jie Han, Ph.D., P.E., F.ASCE**, from the Kansas Section has been selected by the Geo-Institute to receive the **Martin S. Kapp Foundation Engineering Award** *“For his extraordinary contributions to the development of design and analysis methods for stone columns, column supported embankments, geosynthetic reinforced earth structures, and pile foundations which have greatly promoted their applications.”*

**Dr. D. Vaughan Griffiths, Ph.D., P.E., D.GE, F.ASCE**, from the Colorado Section has been selected by the **Geo-Institute Board of Governors** to receive the **2017 H. Bolton Seed Medal** *“For his innovative software developments, publications, textbooks and professional short courses on finite elements and probabilistic methods. His highly-cited work on finite element stability analysis has transformed the way engineers perform slope stability analysis in practice.”*

**Dr. Ning Lu, Ph.D., F.EMI, F.ASCE**, from the Colorado Section has been selected by the **Geo-Institute Board of Governors** to receive the 2017 **Ralph B. Peck Award** *“For his multi-year case study monitoring the subsurface hydrological and mechanical conditions leading to landslide occurrence on the coastal bluffs between Seattle and Everett, WA, and using the data collected to develop a new hydro-mechanical framework for slope-stability analysis.”*

### *We want to hear from you!*

To contribute to the Region 7 newsletter, send articles edited exactly as you'd like them to appear, in Microsoft Word format, to [elise.ibendahl@ch2m.com](mailto:elise.ibendahl@ch2m.com).