



Director's Corner

F. Jay Burress, PE, F.ASCE

We are in the midst of a very interesting time within your Society, that is, ASCE. I have just a few bullet points for you to consider:

- The election for your next ASCE President-elect runs online (and online only) from May 1st to May 31st. Robin Kemper is running against Kristina Swallow (listed alphabetically). Please look at their credentials at ASCE.org or ask whomever you think might offer a knowledgeable opinion. By-laws prevents me from endorsing a candidate in print, however I do know who I am voting for, and if you ask me I will tell you. Most importantly, take the 5 minutes and vote!
- I am going to Reston this month to sit on the committee which will set the 2017 budget. The Board, the ASCE staff, and the thousands of volunteers work diligently to provide value to all our members, to the profession and to society. All this effort takes money. Frankly, we have a budget crisis because we are having problems retaining members transitioning from college to the work force. If you are an engineer a few years (or more) out of school, take a new grad under your wing. Mentor them. Show them (as opposed to telling them) why ASCE provides YOU value.
- Lastly, a success story. On April 23rd, President-elect Norma Jean Mattei, numerous Kansas City Section members, project chairman Roy Bravo and I dedicated an ASCE kiosk on the banks of the Missouri River in the shadow of the ASB Bridge in Kansas City. This kiosk has literally been a 20 year labor of love which cost hundreds of hours of volunteer time, tens of thousands of dollars of contributions and the navigation of a lot of red tape. This was a story of a little vision and a lot of bull-doggedness finally paying off. Congratulations to all involved.

Jay Burress, Region 7 Director
jayburress@members.asce.org

Region 7 Board of Governors

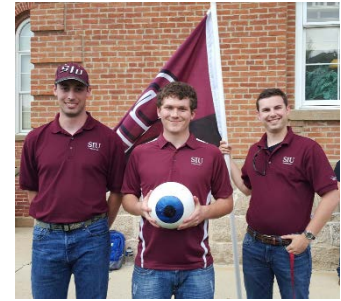
•••

Our Region 7 Board of Governors is here to connect you, the ASCE members of Region 7, to ASCE at the Society level. You can learn more about each of us on the "Contacts" tab of our [Region 7 Website](#), and you can contact us via the contact form at the bottom of the "About" tab on the website. We want to hear from you!

- F. Jay Burress, P.E., ENV SP, F.ASCE, Director/Chair
- Scott Tagge Asher, P.E., M.ASCE
- Claman, P.E., M.ASCE
- Aaron Michael Frits, P.E., ENV SP, M.ASCE
- Elise Marie I bendahl, P.E., ENV SP, M.ASCE
- Jeffrey Young, P.E., M.ASCE
- Gene L Rovak, P.E., F.ASCE
- Edward Wilson Stafford, P.E., PTOE, F.ASCE

MS&T Hosts Mid-Continent Student Conference

Missouri S&T hosted the 2016 Mid-Continent Student Conference in Rolla, MO from April 21-23. This year the conference promoted Steel Bridge, Concrete Canoe, Geo Wall, and Concrete Bowling. It was a beautiful weekend for a conference full of 500 student participants gathered from seventeen schools.



Thursday was in the Gale Bullman Multi-Purpose Building and held all of the steel bridge teams in display, construction, and load testing. Only five of the seventeen teams passed all of the tests, with Southern Illinois University Carbondale, Missouri University of Science and Technology, and University of Missouri going on to represent the conference at the national competition.



Friday was held on campus at the infamous “puck” and supported the display and dunk tank portions of the concrete canoe competition, as well as concrete bowling. The GeoWall event was held in the Materials Lab in Butler Carlton Hall and the canoe presentations were in Toomey Hall. Fourteen teams competed with canoe, eight in concrete bowling, and three in GeoWall. Friday was also a social with representatives from ASCE STL attending at Lions Club Park.

Saturday held the concrete canoe races out at Little Prairie Lake. It was a perfect day for canoe races and the event ran really smooth. Many supporters were also able to make it out to the lake, including friends, family, and faculty members from the universities. Southern Illinois University Carbondale won the concrete canoe competition, going on to represent the conference at nationals. Saturday night was the awards banquet at Columbia College Rolla campus where students ate a catered dinner and received their handmade trophies.

Region 7 Annual Meeting, July 2016

This year’s ASCE Region 7 Annual Meeting will be held in Sioux Falls, SD on July 29 & 30, 2016. Every Section and Branch is encouraged to send a delegate to the meeting for collaboration and information sharing.

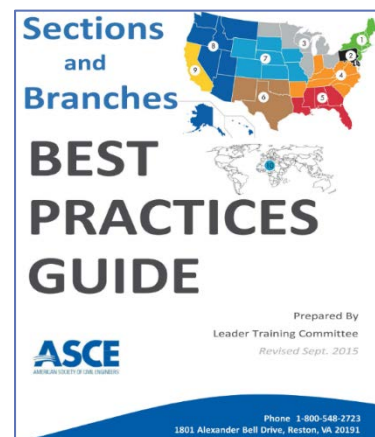
On Friday afternoon, the assembly delegates will meet for 3 to 4 hours to discuss issues and concerns they have experienced with their Sections and to provide topics for discussion with the Region. The Region 7 Board of Governors will concurrently have their Board meeting on Friday afternoon and a social gathering is planned for all that evening.

On Saturday, the assembly delegates will present the highlights of their Section/Branch followed by a roundtable discussion of areas where they are successful and where they struggle. The goal is to provide a venue for Society and the Section and Branches to discuss issues of concern and to develop action items

for improving ASCE at the local level. The conference will also allow participants to learn about the resources available from Society and the public awareness and promotion of the Dream Big Movie.

Section & Branch Best Practice Resources

Did you know that a Best Practices Manual is available at the Geographic Services Region, Section, and Branch Resources page, courtesy of ASCE's Leader Training Committee? A series of recorded webinars on [Best Practices](#) is available on the resources page (scroll down to "Best Practices") along with the [Region Best Practices Guide](#). Did you know that you can also [submit your own best practices](#) to be included in the guide? This is a great way to share your successes with other Sections and Branches.



Meet our Leaders

Region 7 relies on volunteers at many levels-students, sections, branches, younger member groups, and our Board of Governors. This issue will focus on Section and student leaders from the St. Louis Area.

Michael T. Buechter, P.E. St. Louis Section President



Michael received his BSCE degree from the University of Missouri at Rolla and his MSCE degree from Oklahoma State University. He is a Program Manager at the Metropolitan St. Louis Sewer District where he works with a diverse and talented team responsible for in-house design and small construction projects. He originally joined the District in 2003 and has been heavily involved in the region's MS4 permit, Green Infrastructure topics, trenchless technology and private inflow reduction projects.

Mike is a past Director of the Engineers' Club of St. Louis, President of the local section of ASCE, past-chairman of the local chapter of EWRI and serves on several Society level ASCE/EWRI operations, technical and standards committees. Mike has published and lectured extensively on technical and historical topics, and is also an adjunct faculty at St. Louis University. Mike and his wife live in Webster Groves with their four boys where he recently completed near a decade as CubMaster of Pack 315.

Matt Harper, PE, St. Louis Section President-Elect



Matt is a water resources engineer at Water Resources Solutions. Matt received his Bachelors of Science degree in Mathematics from Webster University in 2001 and his Bachelors of Science degree in Civil Engineering from Washington University in 2003. He is a licensed Professional Engineer in Missouri, Illinois, and Kansas. Matt is an active member of the American Society of Civil Engineers and a member of the Engineer's Club of St. Louis. Matt grew up in Columbia, IL and currently lives in Waterloo, IL with his wife and two young sons. In his free time, he enjoys sports, fishing, coaching his sons' sports teams, and spending time with friends and family.



I am the Road Design Leader for the Kansas Department of Transportation and one of our Region 7 Governors, representing Kansas and Kansas City Sections. I have worked for KDOT for the last 13 years, all in the Bureau of Road Design. I have risen through the ranks, from a Road Designer when I started to my current position of Road Design Leader (Project Manager). My staff and I manage anywhere from 20-30 projects at any given time, both preliminary engineering and those under construction. Projects range from bridge replacements and intersection improvements to large system-to-system interchanges, all on the state highway system, all across the State of Kansas. In addition to managing projects, I have several other duties at

KDOT. I teach the PE review courses in Geometric Design and Roadside Safety, monitor research on transportation topics funded by KDOT and performed by the University of Kansas and Kansas State University, serve on 2 NCHRP Research Panels, act as a KDOT's Diverging Diamond expert, and serve as an AASHTO Committee Member for the Technical Committee on Geometric Design. This is what a get paid to do.

What I don't get paid to do, and who I really enjoy volunteering for, is ASCE. I currently serve as a Region 7 Governor, in addition to being a corresponding member with the Leadership Training Committee. I also have served on the Key Contact Committee, and Web Oversight Committee. I have been part of the ASCE Legislative Fly-In the last 4 years, and have greatly appreciated that opportunity to interact with our national legislators. It gives you a true appreciation of the effort it takes to make meaningful impacts on national policy. And lastly, I've judged the steel bridge competition for the ASCE Mid-Continent Conference 6 of the last 9 years. (Yes, a Road Designer enjoys judging a bridge competition). But of all those roles, the activities I enjoy the most are with the students and younger members of ASCE. Visiting with students at their chapter meetings, and seeing them at the student conferences and competitions has been a great way to see the future of our profession. I like to see the progress students make, from their first days as members, through roles as officers and competition captains, to entering professional practice after graduation. I regretfully didn't get involved with ASCE as a student, so that is probably why I love engaging the students in my current ASCE role now. I also relish the opportunities I have had as a Younger Member serving as a Governor; not often do younger ASCE members get that opportunity to serve on a society level at such an early part of their career. I am very thankful for the fact that someone asked me to serve.

While the above appears to show my time is solely occupied with work and ASCE, I really do spend most of my time with my family. My wife Brianna and I have been married for almost 12 years; she makes it possible for me to do all the ASCE activities I am involved with. I frequently describe her role in the family as both the COO and CFO; she takes care of us all. And she does this while managing her career as a Licensed Clinical Social Worker, working for the Veterans Administration as the Homeless Veterans Coordinator for Northeast Kansas.

Lastly, I have 3 kids: Nolan age 8, Olivia age 5, and Colin, 8 months. They keep me busy with their activities, soccer and basketball for Nolan, dance and soccer for Olivia, and swim lessons for all; Colin truly loves being in the water. We all enjoy being outside: Nolan and I play disc golf, I play softball, we visit local playgrounds, and we all attend various sporting events together (we are Iowa State, Chicago Cubs, and Sporting KC fans). Every day in the Frits household is a different adventure!

Edward Stafford, P.E., PTOE, F.ASCE PE, Region 7 Governor



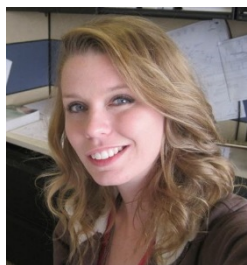
I have spent the last 18 years working in local government in the Denver Colorado area, providing communities with expertise in land development, traffic engineering, regional stormwater management, capital improvement program management and general public works leadership and management. Currently I work for the City of Boulder as the city's Public Works Development Review Manager.

I have been actively involved in ASCE since college, where I started my service to our profession as the first webmaster for the student chapter at the Colorado School of Mines. After graduation I became actively involved in the Colorado Section as the membership committee chair and was subsequently elected to terms of treasurer, secretary, vice president, and finally serving as section president in 2006. At the Society level I have been active on many committees over the years, including the Committee on Student Activities, Committee on the National Concrete Canoe Competition, Committee on Scholarships, and the Student Transition Implementation Task Committee.

One of my passions in ASCE has been working with college students throughout the nation. I currently serve as the chair of the Committee on the National Concrete Canoe Competition and have been involved in the competition for more than 10 years. Beyond the canoe competition I have also been a practitioner advisor to student chapters and have attended student conferences throughout the U.S. and have had the pleasure of meeting and working with many students through the years that are now practicing engineers.

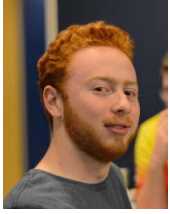
As a native of Colorado I enjoy spending time in our beautiful mountains when I am not spending my time serving our great communities or ASCE.

Britt Marron, PE, St. Louis Section Younger Member Chair



Britt is a transportation/site engineering working for WSP Parsons Brinckerhoff. She is a 9 year professional and has been active on and off with ASCE since college. Community involvement has been very important to her since high school and she actively participates in Rebuilding Together St. Louis, Operation Food Search, and volunteering through her church. It has been a privilege for her to represent the St. Louis Younger Members within our section and externally to ASCE.

Michael Donnelly, St. Louis University Student Chapter President



Mike is a junior and has been a member of ASCE since joining the SLU community as a freshman. Previously the treasurer, Mike is excited to see how he can help ASCE evolve and become a true force to be reckoned with come conference in the spring. When he isn't working with ASCE, you can find Mike working closely with the first-year population as he splits his time with Housing and Residence Life as a Resident Advisor.

Claire McLaughlin, St. Louis University Student Chapter Vice-President



Claire will be a junior and has been an active in ASCE since freshman year. As past historian and secretary she is looking forward to taking on more responsibilities as the vice president. Outside of ASCE Claire enjoys working and taking care of her new dog.

Michelle Bresnahan, SLU Student Chapter Conference Chair and Past-President



Michelle is a senior this year and has been involved in ASCE since her freshman year. Previously Michelle has served as historian and president. As conference chair, Michelle is looking forward to advancing Saint Louis University's rankings and creating an exceptional experience for everyone. Outside of ASCE, Michelle serves as a peer mentor for the MLK Scholarship Program and is actively involved in the First-Year Experience Group as a peer mentor for the Engineering and Innovation Learning Community and peer instructor for a University 101 course. Claire will be a junior and has been an active in ASCE since freshman year. As past historian and secretary she is looking forward to taking on more responsibilities as the vice president. Outside of ASCE Claire enjoys working and taking care of her new dog.

Region 7 Awards Announcements, Coming Soon!

The end of April marked the deadline for submitting nominations for our Region 7 Awards, and we thank Gov. Asher for coordinating our annual awards process. The Board of Governors will review the nominations and winners will be announced soon. Good luck to all nominees, and thanks to all of you for your service to the Society. Region 7 awards include:

- Lifetime Achievement Award
- Outstanding Faculty Practitioner Advisor
- Younger Member Award

Around Region 7

Did you know that you can access Region 7 updates from the Society on [ASCE's website](#)? Here's what's going on this month.

SOUTH DAKOTA SCHOOL OF MINES AND TECHNOLOGY STUDENT CHAPTER **Students 'canstruct' creative structures**



Photo courtesy of South Dakota School of Mines and Technology Student Chapter

[South Dakota School of Mines and Technology](#) students show off their “canstructions” of Bob the Minion with his birthday cake. The sculptures include 1,517 cans.

COLORADO SECTION **Environmental-remediation expert elected Fellow**

Charles D. Shackelford, Ph.D., P.E., F.ASCE, an expert with 30 years of experience in the geoenvironmental aspects of waste management and environmental remediation, has been named a Fellow by the ASCE Board of Direction. A professor and head of the Department of Civil and Environmental Engineering at Colorado State University in Fort Collins, CO, Shackelford had served as director of the EPA's Rocky Mountain Regional Hazardous Substance Research Center, focused on remediation of abandoned mine lands. Discover more about [what made him deserving](#) of Fellow status.

COLORADO SECTION **Wastewater and mine-water treatment specialist named Fellow**

Linda Ann Figueroa, Ph.D., P.E., F.ASCE, associate professor of civil and environmental engineering at the Colorado School of Mines, has been named a Fellow by the ASCE Board of Direction. Figueroa's primary focus throughout her 30 years in environmental engineering has involved wastewater reclamation and mine-water treatment. In the last decade, her work has focused on synthesizing knowledge to develop and demonstrate sustainable technologies.

Read more about [what made her deserving](#) of Fellow status.

COLORADO SECTION **Colorado State water resources grad program coordinator named Fellow**

John W. Labadie, Ph.D., P.E., F.ASCE, professor of civil and environmental engineering at Colorado State University and coordinator of the water resources planning and management graduate program, has been named a Fellow by the ASCE Board of Direction. Labadie specializes in the application of decision-support systems, decision analytics, mathematical programming, artificial intelligence, knowledge-based systems, and geographic information systems to complex problems in water resources and environmental-systems management. Read more about [what made him deserving](#) of Fellow status.

Great outreach event or other activity? Let the whole Region know!

If you're a local ASCE leader and your Section, Branch, Younger Member Group, or Student Chapter has staged any special events, engaged in outreach from grade-school kids to lawmakers, done charity work, fund raising or anything of the sort, let *ASCEnews Weekly* know and we may include it in next month's Region report. You may already have written about it and posted pictures in your newsletter, website, or social media. Share the details and any photos at [asce.org/localnews](#). Got questions? Write to [submissions@asce.org](#).

Region 7 Grants in Action

St. Louis Younger Member Group - Meet A Professional Luncheon



YMs Alison Graves, Britt Marron & Brandi

On Wednesday April 13th, the St. Louis Younger Member Group held the “Meet a Professional Luncheon” at Il Monastero at Saint Louis University. The luncheon matched 24 ASCE Student Chapter Members from Saint Louis University (SLU), Southern Illinois University (SIU), and Southern Illinois University Edwardsville (SIUe) with local professionals in their same field of civil engineering.

We began with lunch and a brief presentation on the Society, St. Louis Section & YMG. We had a group introduction using The 5 S’s of Meeting People: Stand, Smile, Say your name, Shake hands & Say “Nice to meet you!” The pairs then had free discussion time to discuss careers, their chosen field, goals, etc.

Organizations Represented:

- ESI
- DreamRunners Ltd.
- TAP Engineers LLC
- Horner & Shifrin
- Burns & McDonnell
- Alper Audi
- Metro St. Louis
- Parsons Brinckerhoff
- HNTB
- Hanson
- David Mason & Associates
- SCI Engineering, Inc.
- Reitz & Jens
- Gateway Geotechnical
- Alberici
- SCI Engineering, Inc.
- Metropolitan St. Louis Sewer District
- Wade Trim
- Black & Veatch Corporation
- Geotechnology
- Jacobs Engineering
- AECOM



The event was organized by Alison Graves with assistance from YMG Chair Britt Marron, Brandi Jones & Melantha Norton. A huge thank you to the Michelle Bresnahan from the SLU Student Chapter for reserving the facility, and to the YMG, Region 7, and the ASCE Foundation for sponsoring the event!

Did your group receive a Region 7 Grant? Send us an article for the next newsletter at eibendah@ch2m.com!

Congratulations to our Region's Society Level Award Winners!

Student Chapters

The **University of Wyoming Student Chapter** was awarded the 2016 ASCE Distinguished Chapter Award by the ASCE Committee on Student Members, the Richard J. Scranton Outstanding Community Service Award, and is a Robert Ridgway Award Finalist this year.

The **University of Kansas and St. Louis University Student Chapters** were selected by the Committee on Student Members to receive a Certificate of Commendation for outstanding activities as recorded on the 2015 Chapter Annual Report. This is a distinction earned by only the top 5% of all student organizations. The SLU student chapter was also awarded the "Above and Beyond" award from SLU's Parks College of Engineering!

The **United States Air Force Academy Student Chapter** was awarded the 2016 Most Improved Chapter by the ASCE Committee on Student Members.

The following eight Student Chapters were awarded Honorable Mention by the committee on Student Members:

- Colorado School of Mines
- University of Iowa
- Iowa State University
- Kansas State University
- University of Missouri-Columbia
- University of Nebraska-Lincoln
- University of Nebraska-Lincoln at Omaha
- South Dakota State University

Institutes

The **St. Louis Chapter of EWRI** was named the 2016 Outstanding Technical Group/Institute Chapter by the ASCE/EWRI Local Activities Council.

Members

Dr. Noriaki Ohara, Ph.D., M.ASCE from the Wyoming Section has been selected by the Society Awards Committee to receive the 2016 J. James R. Croes Medal as a co-author for the paper, "Physically Based Estimation of Maximum Precipitation over Three Watersheds in Northern California: Atmospheric Boundary Condition Shifting," *Journal of Hydrologic Engineering*, April 2015."

Bruce R. Ellingwood, Ph.D., P.E., F.SEI, Dist.M.ASCE, NAE, selected by the Engineering Mechanics Institute to receive the 2016 Alfred M. Freudenthal Medal "For the unique role that he has played in introducing concepts of

probability, statistics and structural reliability to structural engineering and for transforming structural reliability from academic research specialty into a mainstream of structural engineering practice." In selecting you for this award, the committee particularly noted your research on probabilistic aspects of low-cycle fatigue and fracture.

Mr. James L. Barnard, Ph.D., C.Eng., M.ASCE, NAE of the Kansas City Section has been selected to receive the 2017 Simon W. Freese Environmental Engineering Award and Lecture "For his contribution to the environmental engineering profession and particularly

developing the BARDENPHO (BARNard DENitrification and PHOsphorus removal), Phoredox (later AO and A2O), Modified Balakrishnan/Eckenfelder (later called the MLE) and Westbank Processes.”

Dr. Thomas J. Trout, Ph.D., P.E., M.ASCE of the Colorado Section has been selected to receive the 2016 Royce J. Tipton Award “For research contributions that have enhanced our understanding of irrigation-induced erosion, the effect of irrigation and soil management practices on the fate of soil fumigants, and the impact of deficit irrigation on crop productivity.”

Mr. Steven R. Abt, Ph.D., P.E., D.WRE, F.ASCE of the Colorado Section has been selected to receive the 2016 Hydraulic Structures Medal “For his substantial leadership and contributions toward the advancement of hydraulic engineering by conducting experiments and directing students in experimental hydraulics to help establish hydraulic structure design practices.”

John Stansbury, P.E., M.ASCE of the Nebraska Section has been selected to receive the 2016

Rudolph Hering Medal “For co-author of the paper, “Contributions of Internal and External Fouling to Transmembrane Pressure in MBRRs: Experiments and Modeling,” Journal of Environmental Engineering, June 2015.”

Dr. Tian C. Zhang, Ph.D., P.E., D.WRE, F.ASCE of the Nebraska Section has been selected to receive the 2016 Rudolph Hering Medal “For co-author of the paper, “Contributions of Internal and External Fouling to Transmembrane Pressure in MBRRs: Experiments and Modeling,” Journal of Environmental Engineering, June 2015.”

Prof. Larry W. Mays, Ph.D., P.E., D.WRE, F.ASCE of the Colorado Section has been selected to receive the 2016 Ven Te Chow Award “For his research on watersheds, water resources, water infrastructure and hydro systems addressing their design, management and optimal operations, and his popular and authoritative textbooks and handbooks that have had an international impact.”